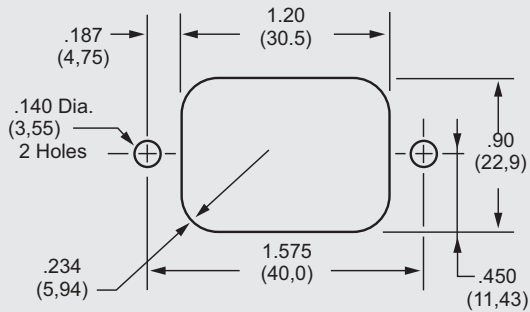
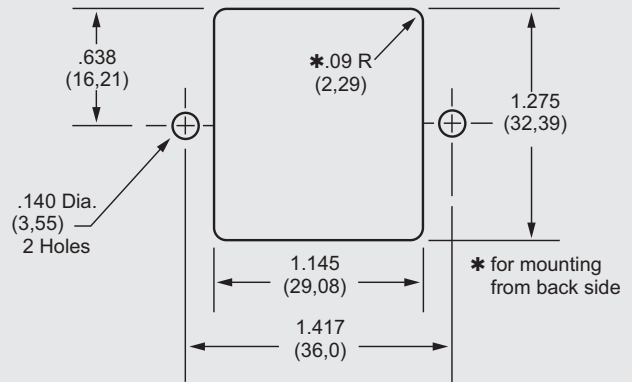


Standard Mounting Cutouts

F1200CA, F1250CA, F1299CA, F1300CA, F1399CA, F1400CA, F1500CA, F1600CA, F1700CA



F1500FA, F1600FA,



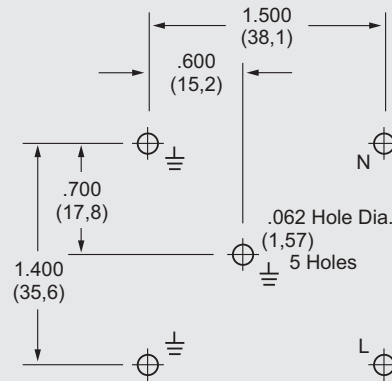
How to Order

The Curtis part numbering system is made up of four elements. Each element denotes a specific requirement (mechanical or electrical) which, when properly sequenced, fully identifies the required catalog filter. As shown, the first five alpha/numeric characters denote the series type; the sixth character (alpha) denotes the type of line termination; the seventh character (alpha) denotes the type of load termination; the last two characters (numeric) denote the current rating.

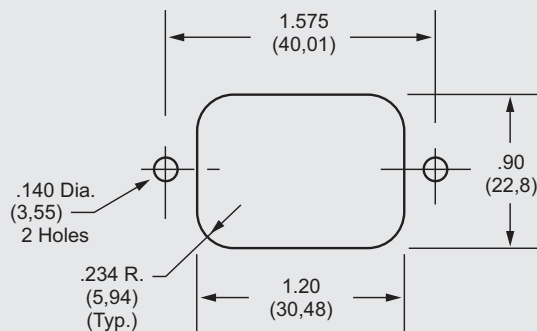
Compose your part number as follows: Select the series required, add two alpha character for the line and load termination, followed by two numeric characters for the required current rating. For example, F1100AB06 completely identifies an F1100 series filter with quick connects on line side and wire leads on load side, with a 6-amp rating.

SINGLE PHASE FILTERS

F1300CP, F1350CP, F1600CP



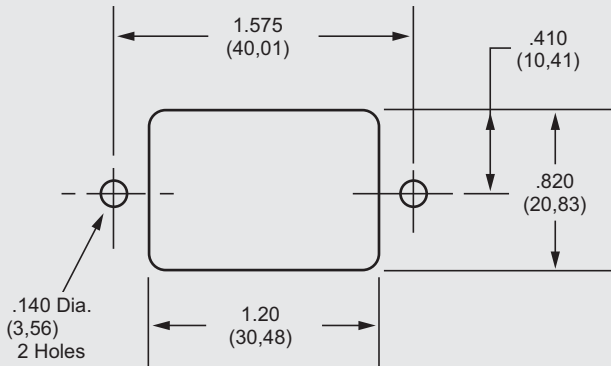
F5500/5600/5700 SERIES



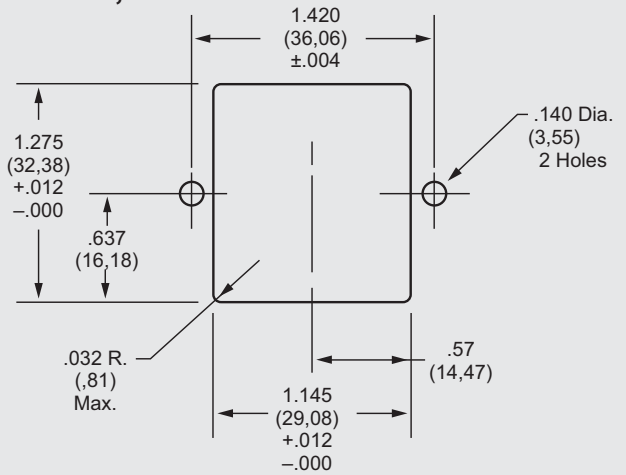
F1100	X	X	X
SERIES	LINE TERMINATION	LOAD TERMINATION	CURRENT RATING
A = Quick Connects	A = Quick Connects	A = Quick Connects	01 = 1 Amp
B = Wire Leads	B = Wire Leads	B = Wire Leads	03 = 3 Amps
C = IEC Connector	C = IEC Connector	C = IEC Connector	06 = 6 Amps
D = Screw Terminals	D = Screw Terminals	D = Screw Terminals	10 = 10 Amps
F = Fused IEC	F = Fused IEC	F = Fused IEC	15 = 15 Amps
P = Printed Circuit Pins	P = Printed Circuit Pins	P = Printed Circuit Pins	20 = 20 Amps
W = Dual Fused IEC	W = Dual Fused IEC	W = Dual Fused IEC	30 = 30 Amps
J = Switched IEC	J = Switched IEC	G = Solder Tab	



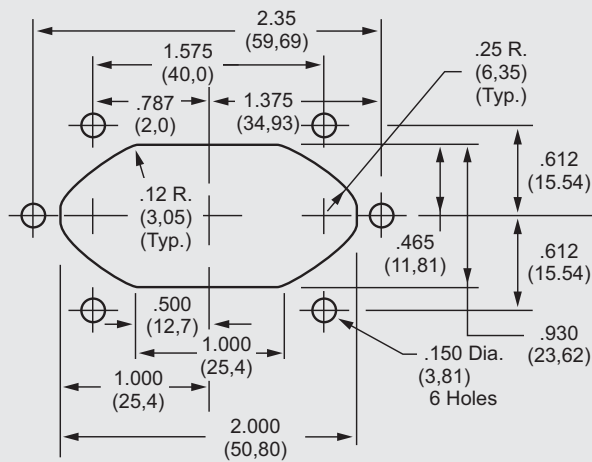
F5100 SERIES



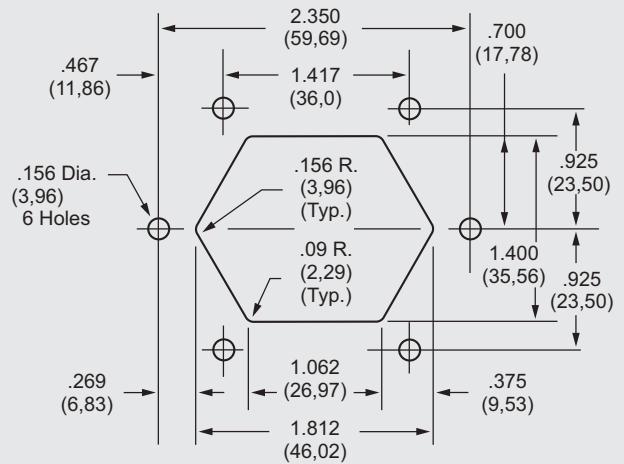
F5200, F5600FG SERIES



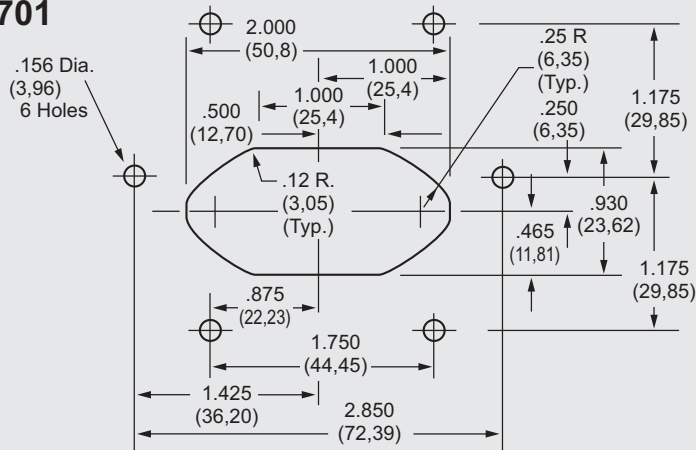
F5101 SERIES



F5201, F5601FG SERIES



F5501/5601CG/5701 SERIES



NOTE: Tolerance for all dimensions unless otherwise specified: .XXX three place ± .004, .XX two place ± 0.10

Dimensions are in inches and millimeters unless otherwise specified. Values in parentheses are metric equivalents.



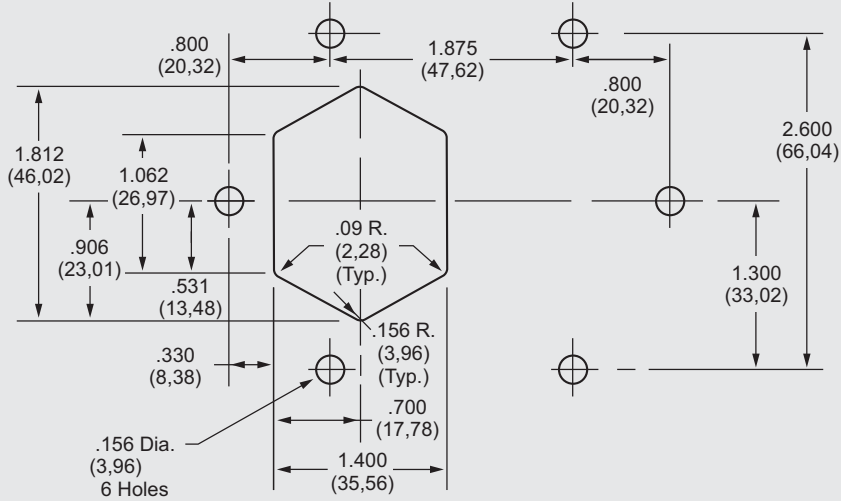
Curtis Industries
A Division of Powers Holdings, Inc.

1-800-657-0853

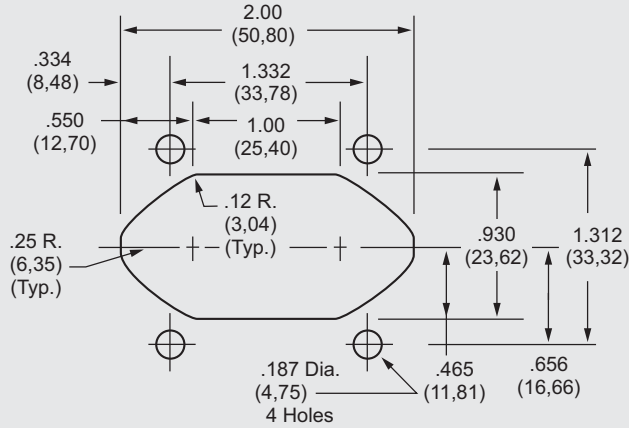
Standard Mounting Cutouts

SINGLE PHASE FILTERS

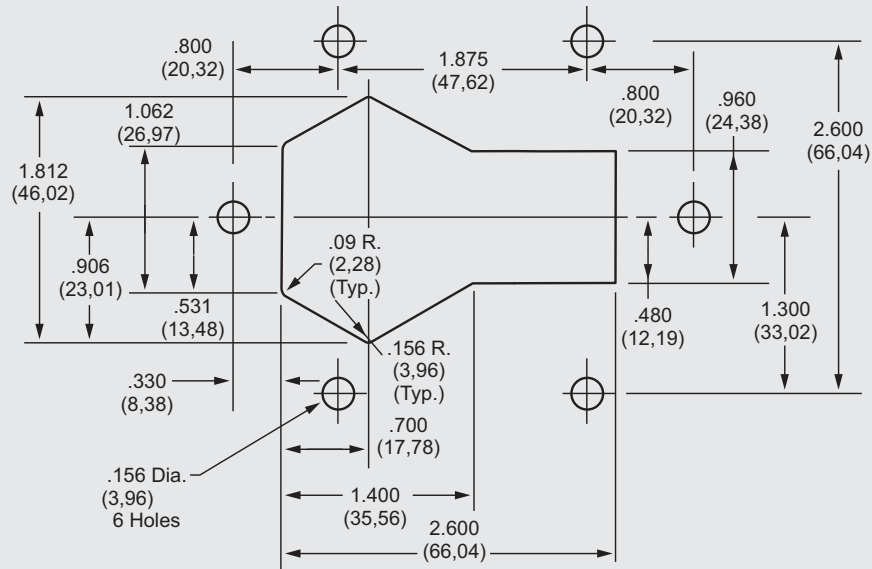
F5900FG



F5900CG



F5900JG



NOTE: Tolerance for all dimensions unless otherwise specified: .XXX three place ± .004, .XX two place ± 0.10

