

MMT

Functional characteristics



Dimensional class:

low



Standard colour:

green



Height:

14.85 mm
(.585 in)



Max approved wire size:

solid: 1.5 mm² (IEC EN); 16 AWG
 stranded: 1.5 mm² (IEC EN); 16 AWG
wire entry size:
 2.4 x 1.95 mm (.094 x .076 in)



Versions:

side stackable,

Single mould poles:

from 2 to 16



Pitches:

metric 3.5 mm, 7 mm
(.138 in, .276 in)

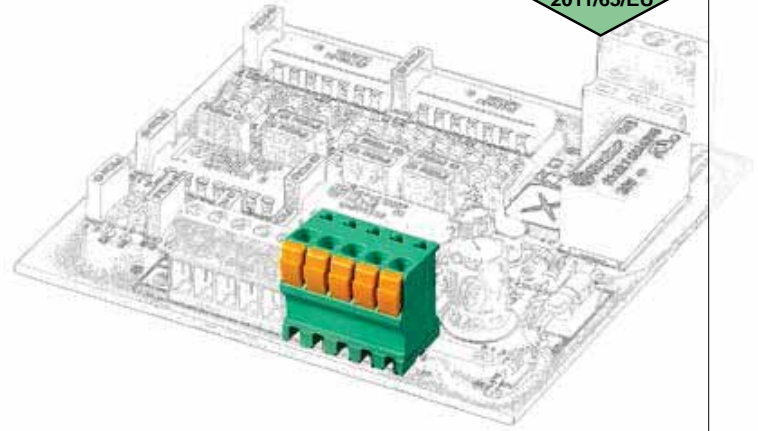
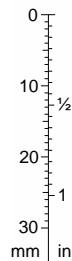


imperial 3.81 mm, 7.62 mm
(.150 in, .300 in)



Solderable at a temperature up to

270°C / 518°F



pitch 3.5/3.81 mm
side stackable, straight

Brief description

Although the **MMT** series of terminal blocks is small in size it offers a **high connection capacity**; in fact wires up to **1.5 mm² (16 AWG)** can be used and consequently a certified current range of **10A can be reached**.

It is available in 3.5 mm (.138 in) and 7 mm (.275 in) metric pitches and in 3.81 mm (.100 in) and 7.62 mm (.300 in) Imperial pitches, in monolithic blocks from 2 to 16 poles, in the side-stackable version, with insertion of the wire perpendicular to the PCB.

The basic monolithic terminal boards can be side-stacked on the PCB in order to obtain any number of poles without losing the pitch; by taking advantage of this particular characteristic a minimum stock of basic terminal blocks can be kept.

It is simple to manage the product, the warehouse and the assembly with the **Kit packages** because several versions can be received with only one code, the part-numbers are significantly reduced and the risk of making mistakes is also reduced.



Characteristics of components

Steel clamping spring

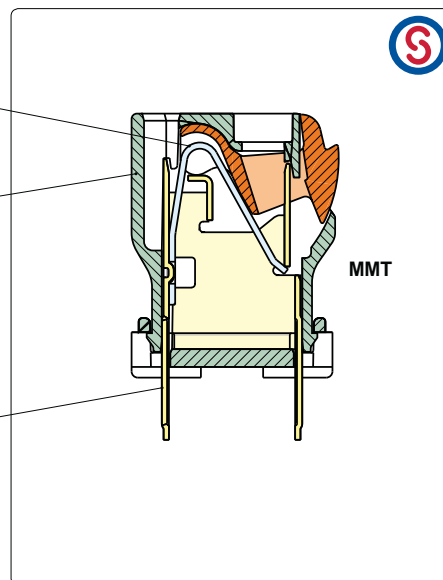
Polyamide Housing.

Standard colour: GREEN.

V0 Self-extinguishing according to UL 94.

Chlorinated solvents resistant,
with no phosphor, dioxin or detrimental to health halogens.
Material Group I (CTI \geq 600 V)

Lead-free tin-plated copper alloy spring.



Mechanical characteristics

PCB thickness:	max. 2.4 mm (.094 in)
PCB hole diameter:	min. 1.4 mm (.055 in)
Stripping length	9 ÷ 10 mm (.41 ÷ .45 in)
Operating temperature range	-40 °C ÷ +110 °C (-40 °F ÷ +230 °F)
Climatic category	40/110/21 according to EN 60068-1

Electrical characteristics*

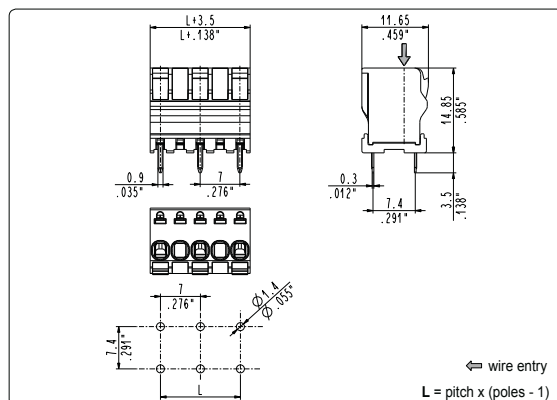
Solid wire section	0.14 ÷ 1.5 mm ² (IEC EN)* 30÷16 AWG *
Stranded wire section	0.14 ÷ 1.5 mm ² (IEC EN)* 30÷16 AWG *
Rated voltage for 3.5 mm (.138 in) and 3.81 mm (.150 in) pitch	300 V *
Rated voltage for 7 mm (.276 in) and 7.62 mm (.300 in) pitch	750 V *
Rated current	9 A (UL)*
Contact resistance	<15 mΩ
Insulation resistance	>10 ⁹ Ω (500V DC)

*All the a.m. data refer to the highest values amongst the certified ones.

V voltage, I current values and tightening torque are related to the norms to be applied to the product and to its use.

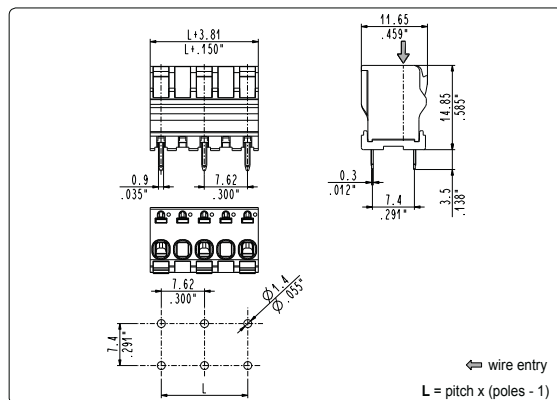
Approvals

IEC-EN	IEC:	130 V - T 110 - 10 A - 1.5 mm ² solid and stranded for 3.5 mm and 3.81 mm pitch
	EN 60998	750 V - T 110 - 10 A - 1.5 mm ² solid and stranded for 7 mm and 7.62 mm pitch
UL	UL:	300 V - 9 A - 30÷16 AWG for 3.5 mm, 3.81 mm, 7 mm and 7.62 mm pitch
	E167473	Application values for end-use equipment have to be in accordance to UL norms and applicable to them.
VDE	VDE:	130 V - 10 A - T 110 - 1.5 mm ² for 3.5 mm and 3.81 mm pitch
	pending	450 V - 10 A - T 110 - 1.5 mm ² for 7 mm and 7.62 mm pitch
IMQ	IMQ:	130 V - T 110 - 10 A - 1.5 mm ² solid and stranded for 3.5 mm and 3.81 mm pitch
	pending	750 V - T 110 - 10 A - 1.5 mm ² solid and stranded for 7 mm and 7.62 mm pitch



MMT_009	straight, side stackable
---------	--------------------------

7 mm / .276" pitch

[illegible]

MMT__007 straight, side stackable

7.62 mm / .300" pitch

Poles	Code	Pcs/pack.	W [kg]*	Pcs/Ind.**	W [kg]*
02	MMT02007	500	1,11	2000	4,44
03	MMT03007	325	1,08	1300	4,33
04	MMT04007	225	1,00	900	4,00
05	MMT05007	175	0,97	700	3,89
06	MMT06007	150	1,00	600	4,00
07	MMT07007	125	0,97	500	3,89
08	MMT08007	100	0,89	400	3,55
09	MMT09007	100	1,00	400	4,00
10	MMT10007	75	0,83	300	3,33
11	MMT11007	75	0,92	300	3,66
12	MMT12007	50	0,67	200	2,66
13	MMT13007	50	0,72	200	2,87

****industrial packaging:** add "-00000E" at standard code