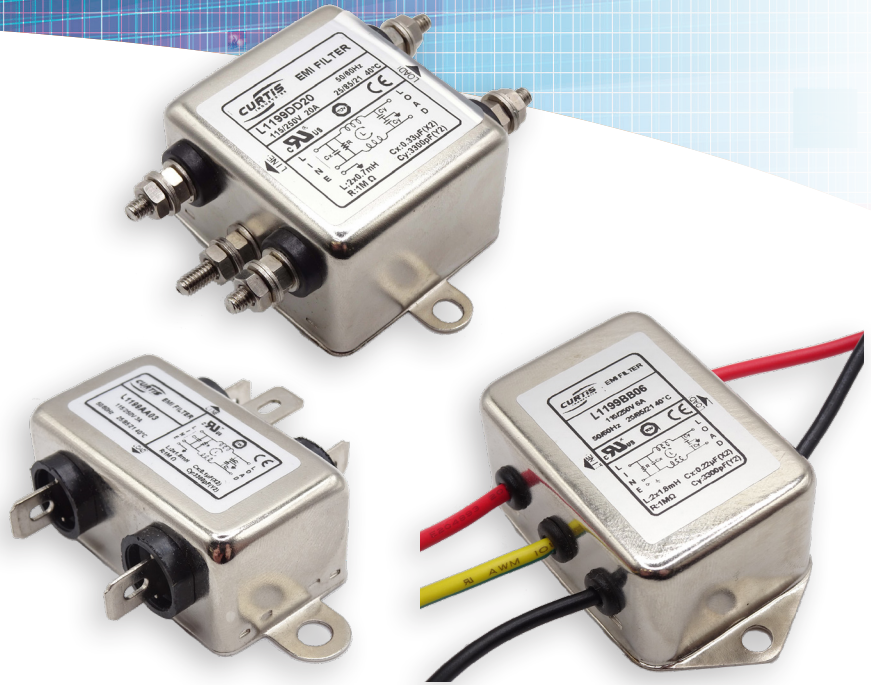


L1199 Series

- General Purpose, single-stage filter
- Excellent performance/compact design
- Chassis-mount design
- Available with 1/4" x .032" QC terminals (AA) or wire leads (BB). Threaded-studs on 20A model.



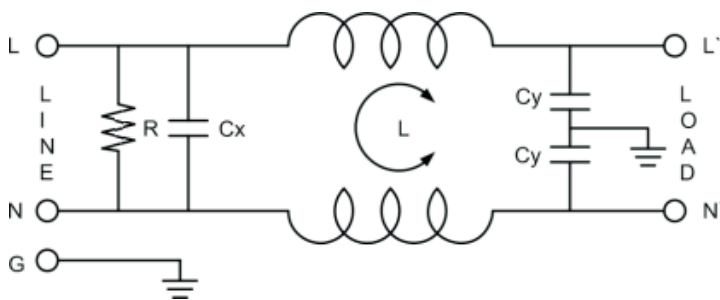
Features

- Designed for Common Mode Emissions or Susceptibility Applications
- Low-cost design
- Available in 2A to 20A Current ratings

Applications

- Ideal for power supplies in digital equipment
- Kiosk, gaming and food preparation equipment
- Test and measurement equipment
- Commercial equipment and household appliances

Electrical Schematic



Approvals



Technical Data

| | |
|----------------------|--|
| Max Rated Voltage: | 250VAC @ 50/60Hz |
| Rated Current: | 2A to 20A @ 40°C |
| Hipot Rating: | L/N 1450VDC L/G, N/G 2000VAC/ 2250VDC |
| Protection Level: | IP40 according to IEC 60529 |
| Leakage Current: | <0.8 mA @ 250VAC/50Hz |
| Temperature Rating: | -25°C to +85°C (25/85/21) |
| Safety Approvals: | UL60939-2 CSA C22.2 No.8 (50°C) IEC/EN 60939 |
| Flammability Rating: | UL 94V-0 |

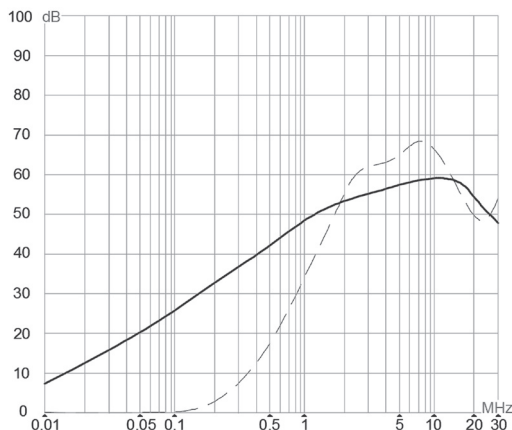
L1199 Series

| Model No. ¹ | Rated Current @40°C | Terminations | Mounting | Leakage Current 250V/50Hz | MAX Rated Voltage | Operating Frequency (Hz) |
|------------------------|---------------------|-------------------|-----------------|---------------------------|-------------------|--------------------------|
| L1199AA02 | 2A | 1/4" QC Terminals | Chassis-mounted | < 0.8 mA | 250 VAC | 50/60 Hz |
| L1199BB02 | | Wire leads | | | | |
| L1199AA03 | 3A | 1/4" QC Terminals | Chassis-mounted | < 0.8 mA | 250 VAC | 50/60 Hz |
| L1199BB03 | | Wire leads | | | | |
| L1199AA06 | 6A | 1/4" QC Terminals | Chassis-mounted | < 0.8 mA | 250 VAC | 50/60 Hz |
| L1199BB06 | | Wire leads | | | | |
| L1199AA10 | 10A | 1/4" QC Terminals | Chassis-mounted | < 0.8 mA | 250 VAC | 50/60 Hz |
| L1199BB10 | | Wire leads | | | | |
| L1199AA20 | 20A | 1/4" QC Terminals | Chassis-mounted | < 0.8 mA | 250 VAC | 50/60 Hz |
| L1199DD20 | | Threaded-studs | | | | |

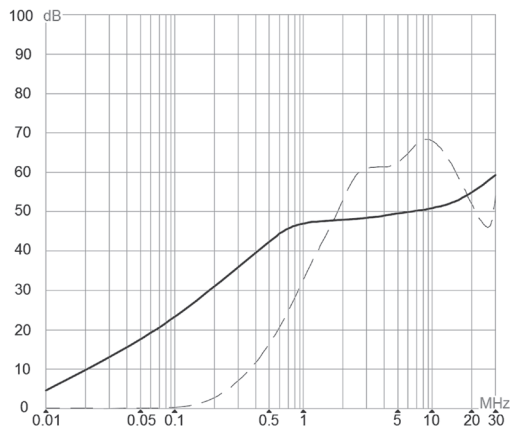
Performance

Insertion Loss (typ) ——— (Common Mode) - - - - (Differential Mode)

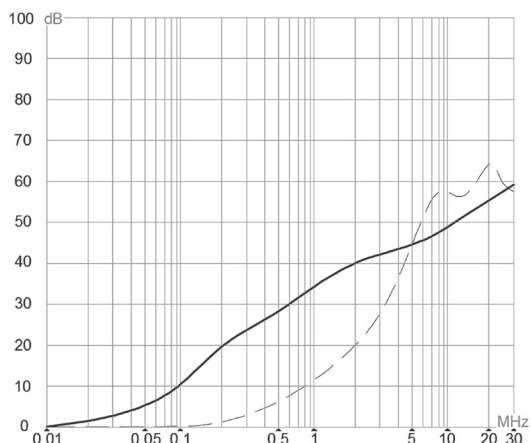
L1199xx02



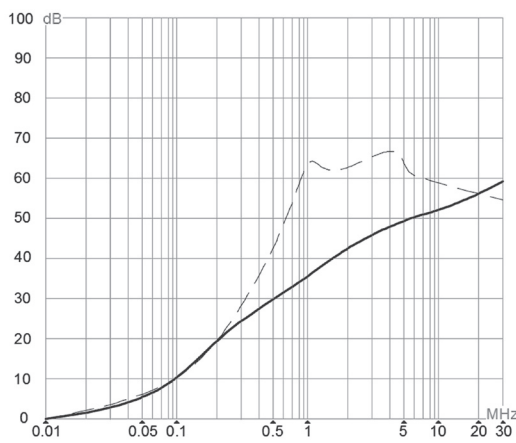
L1199xx03 & L1199xx06



L1199xx10



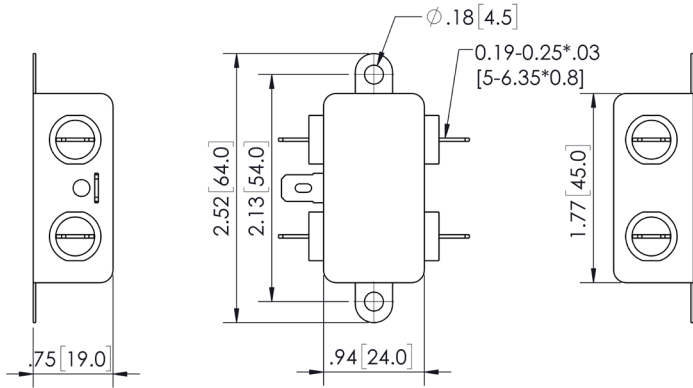
L1199xx20



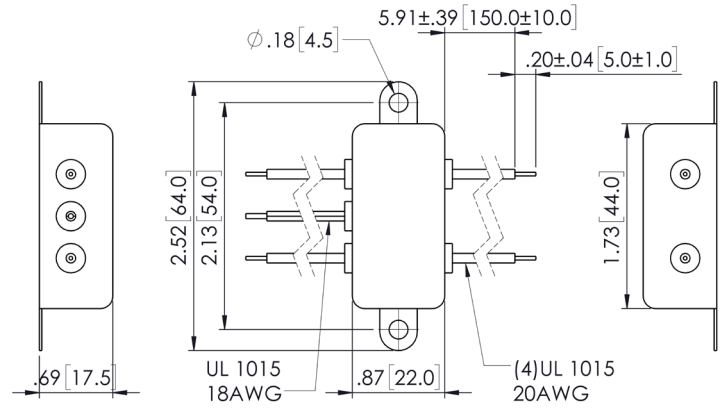
L1199 Series

Dimensions

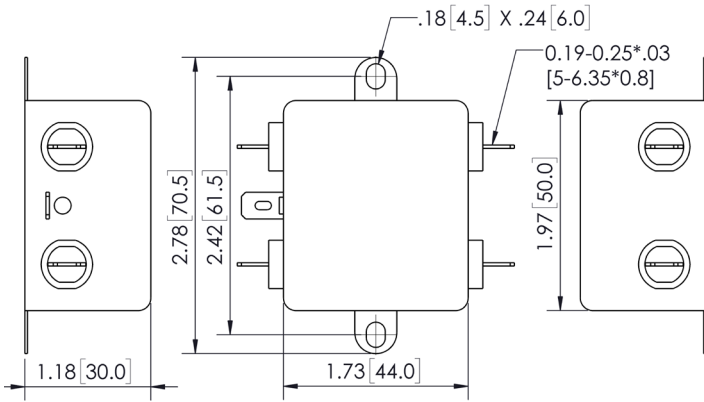
L1199AA02, L1199AA03, & L1199AA10



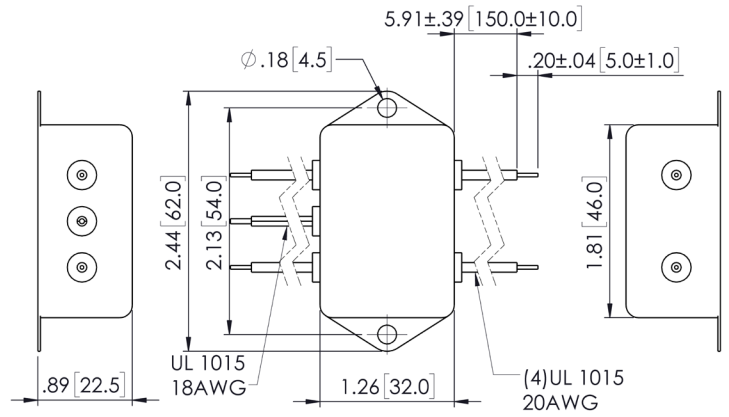
L1199BB02 & L1199BB03



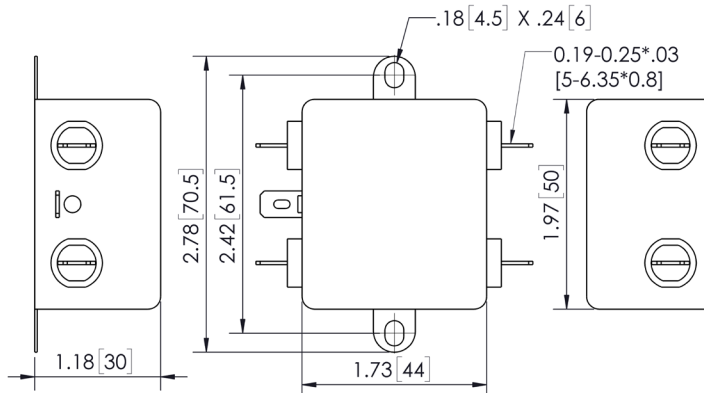
L1199AA06



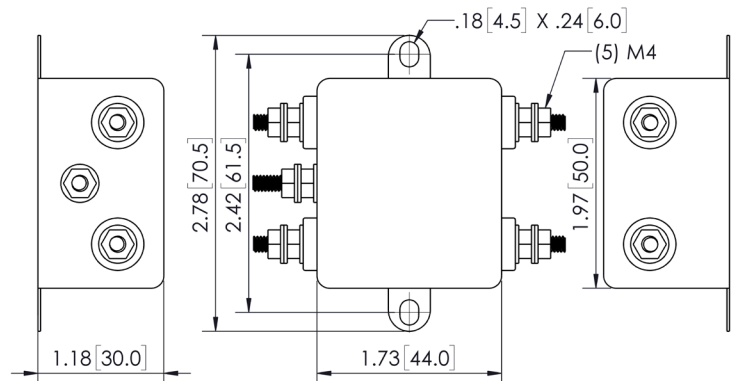
L1199BB06 & L1199BB10



L1199AA20



L1199DD20



All dimensions are inch [mm] unless otherwise specified.