

OK501 Series

11.0mm Center-to-Center Spacing

General Information

KORNER OK501 Series, UL File E73420
(Distributed by Curtis Industries)

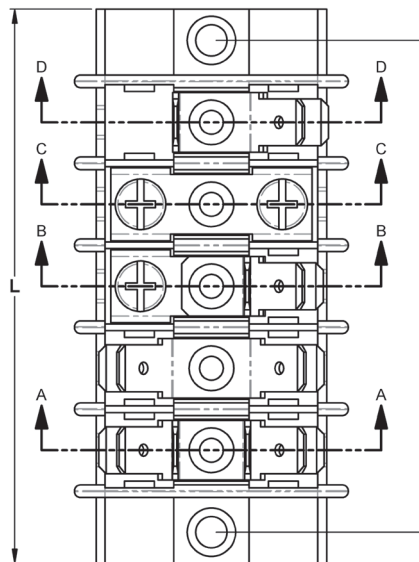
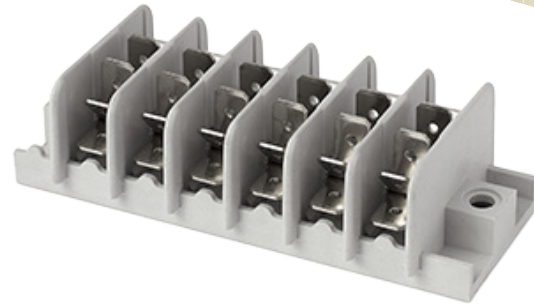
Material Information

- Body: Grey Polyphenylene, PPO, UL94V1
- Cover: Grey ABS, UL94HB
- Inserts: Brass, Nickel-Plated,
- Screws: Steel, Zinc-Plated
- Working Temperature: 85°C Max
- Recommended Mounting Screws M 4

Safety Approvals



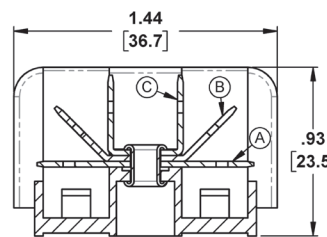
Rated Current (A)	Rated Voltage (Vac)	Group	AWG / mm ²	Rated Temp
16	300	B,C	18-12 Cu	105°C
24	450	-	2.5mm ²	85°C



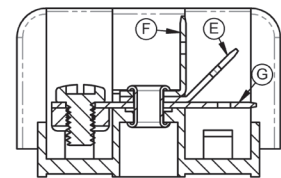
Number of Terminals	Length (L)		Mounting (I)	
	(In.)	(mm)	(In.)	(mm)
1	1.20	30.4	0.87	22
2	1.63	41.4	1.30	33
3	2.06	52.4	1.73	44
4	2.50	63.4	2.17	55
5	2.93	74.4	2.60	66
6	3.36	85.4	3.03	77
7	3.80	96.4	3.46	88
8	4.23	107.4	3.90	99
9	4.66	118.4	4.33	110
10	5.09	129.4	4.76	121
11	5.53	140.4	5.20	132
12	5.96	151.4	5.63	143
13	6.39	162.4	6.06	154
14	6.83	173.4	6.50	165
15	7.26	184.4	6.93	176
16	7.69	195.4	7.36	187

Tolerances:

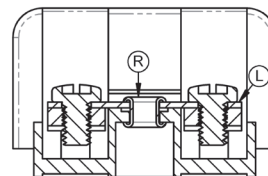
40-150mm: ±0.3mm 150-300mm: ±0.4mm



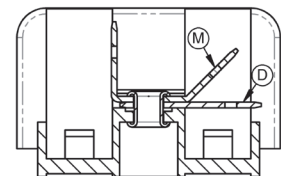
SECTION A-A



SECTION B-B



SECTION C-C



SECTION D-D

Part Numbers - Assembly

How to Order

OK501 / x+y+z (up to 3 options)

- Terminal Blocks with Nickel-Plated Brass .250" QC Terminals
- # of Poles, (01-16)

- Connection Elements
(Select up to 3 connections from the table below. Contact Curtis Industries for unique configurations from pole to pole)

		CONNECTOR ELEMENTS	DESCRIPTION
		A	Double tab 0°
		B	Double tab 45°
		C	Double tab 90°
		D	Single tab 0°
		E	Single tab 45°
		F	Single tab 90°
		G	Combined screw & tab 0°
		H	Combined screw & tab 45°
		I	Combined screw & tab 90°
		L	Dual screws
		M	Double tab 45°/90°
		N	Pole-to-Pole shorting link
		O	Grounding/Earth contact

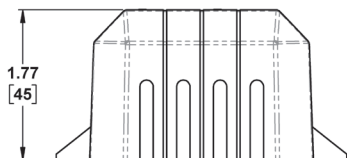
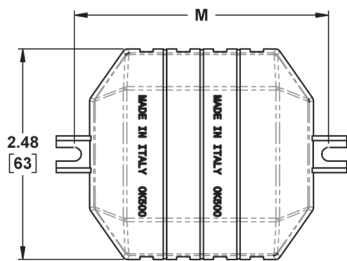
Part Numbers - Cover

How to Order

OK500/

Series 500
Terminal
Block Cover

of Poles,
(01-16)



Number of Terminals	Mounting (M)	
	(In.)	(mm)
1	1.69	43
2	2.13	54
3	2.56	65
4	2.99	76
5	3.43	87
6	3.86	98
7	4.29	109
8	4.72	120

Number of Terminals	Mounting (M)	
	(In.)	(mm)
9	5.16	131
10	5.59	142
11	6.02	153
12	6.46	164
13	6.89	175
14	7.32	186
15	7.76	197
16	8.19	208