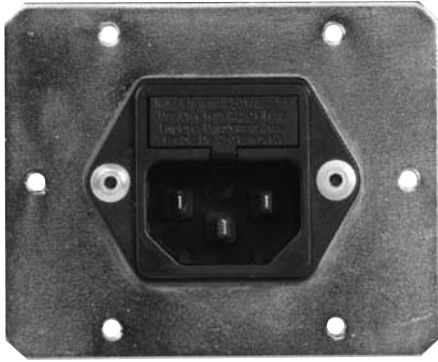


F5200 RFI Filters

Wide Band

SINGLE PHASE FILTERS



Ideal for Linear Power Supplies in Digital Equipment

Features:

- General Purpose Filter with Extended High-Frequency Insertion Loss Characteristics
- Effective Suppression of Incoming Common Mode and Differential Mode Noise
- Low-Profile Package with Integral IEC Connector
- Available in 3 and 6Amp Ratings

Nominal Current Rating	Part Number	Termination Line/Load
3A	F5200FG03	Fused IEC/ Solder Tab
6A	F5200FG06	Fused IEC/ Solder Tab

Specifications:

Rated Voltage: 250VAC Maximum - 50/60 Hz

Rated Current: 115VAC 250VAC
 3A 1.5A
 6A 4A

Current Overload: 6X for 8 seconds

Hi-Pot Test (1 min):

Line to Ground 1400VDC
Line to Line 1450VDC

Insulation Resistance: $9 \times 10^9 \Omega$ at 100VDC

Ambient Temperature: 40°C Max. at rated current

Humidity Range: 0% to 95% R.H.

Termination:

F: Fused IEC Receptacle
G: Wire Wrap/Solder

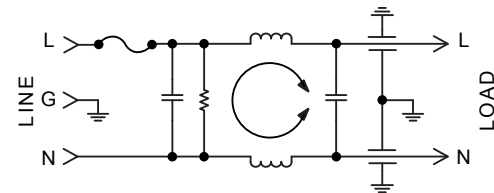
Maximum Leakage Current:

Each Line to Ground **F5200**
115VAC, 60Hz: 0.25mA
250VAC, 60Hz: 0.50mA

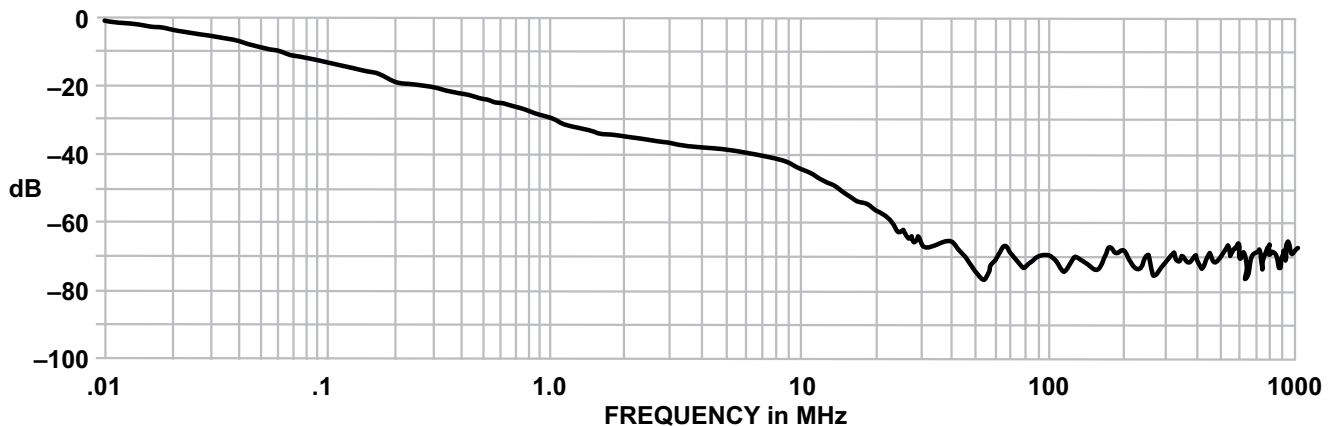
Agency Approvals:



F5200 Simplified Schematic

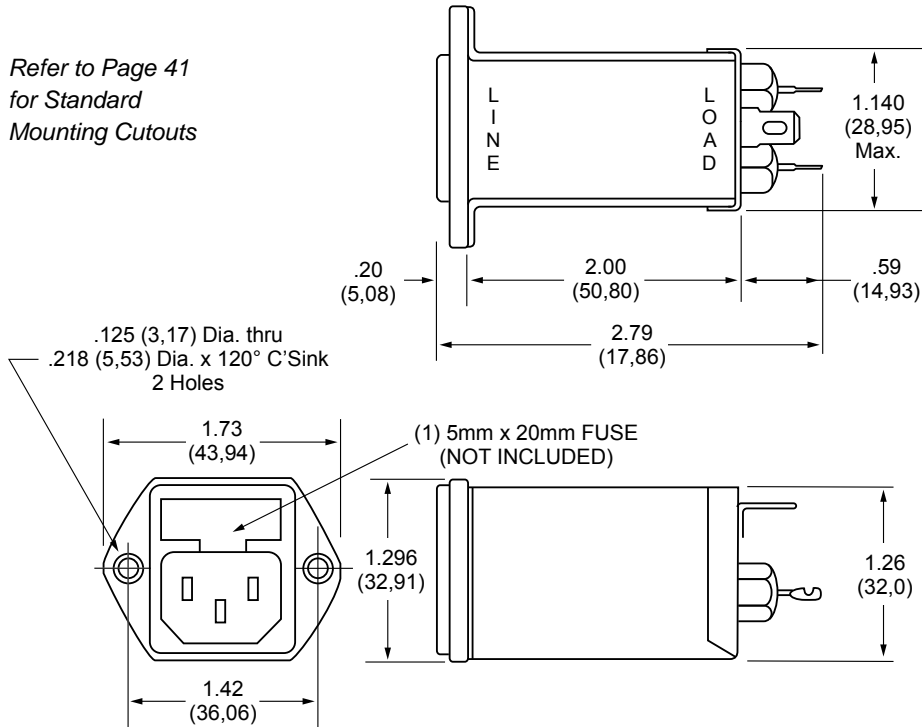


**F5200 SERIES
TYPICAL COMMON MODE
INSERTION LOSS — dB
(50 OHM CIRCUIT)**

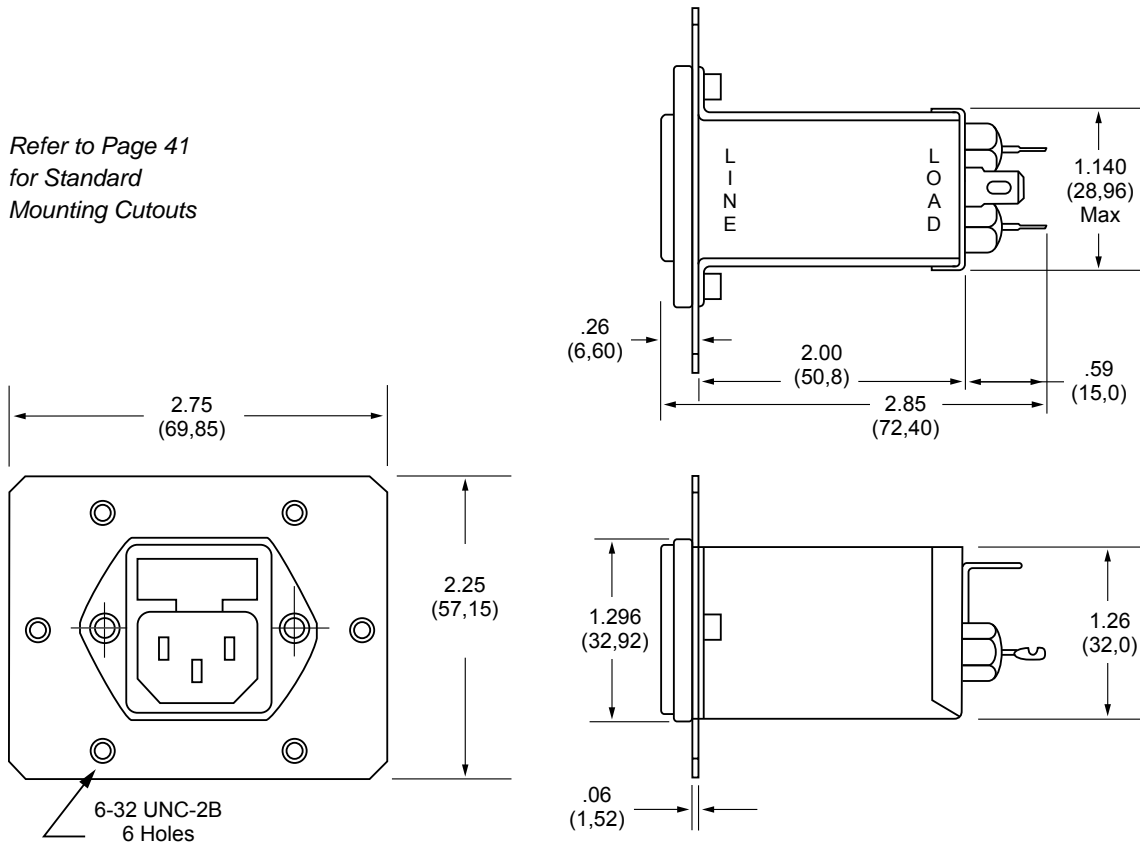


F5200FG (3 and 6Amp) Dimensions

Refer to Page 41
for Standard
Mounting Cutouts

**F5201FG (3 and 6Amp) Dimensions with attached mounting plate**

Refer to Page 41
for Standard
Mounting Cutouts

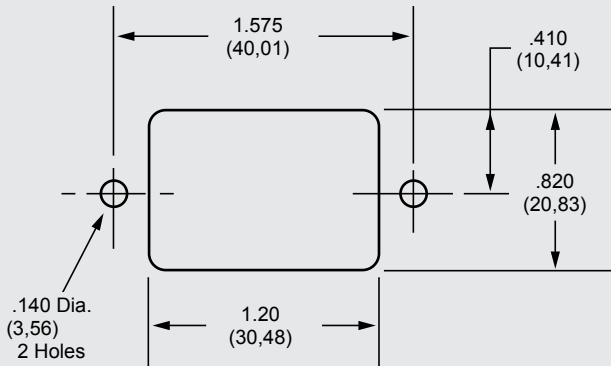


Dimensions are in inches and millimeters
unless otherwise specified.
Values in parentheses are metric equivalents.

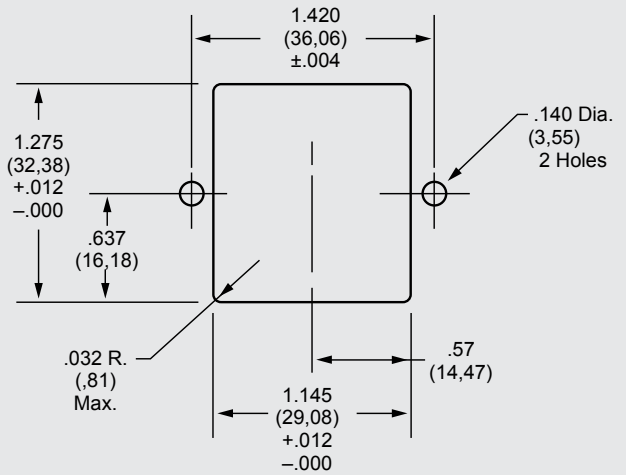


Curtis Industries
A Division of Powers Holdings, Inc.

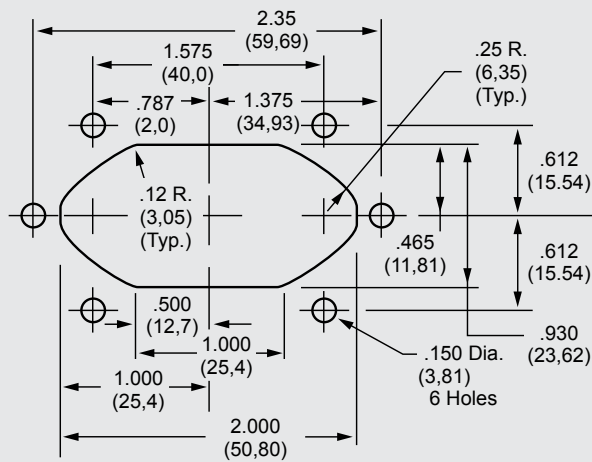
F5100 SERIES



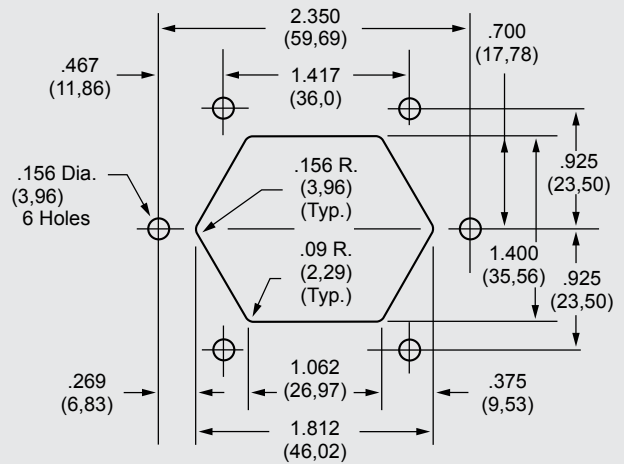
F5200 SERIES



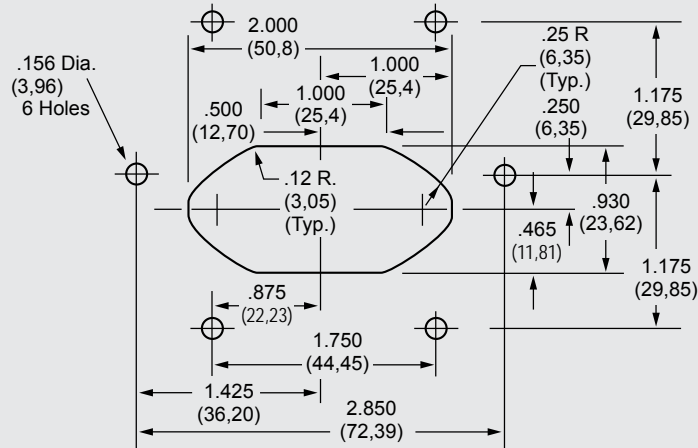
F5101 SERIES



F5201 SERIES



F5501/5601/5701 SERIES



NOTE: Tolerance for all dimensions unless otherwise specified: .XXX three place ± .004, .XX two place ± 0.10

Dimensions are in inches and millimeters unless otherwise specified. Values in parentheses are metric equivalents.



Curtis Industries
A Division of Powers Holdings, Inc.

1-800-657-0853