



F3400 Series

- Designed for use in UL/IEC/EN60601-1 applications
- Excellent performance/compact design
- Quick-connect terminals (0.250" x 0.032")
- Front panel mount design



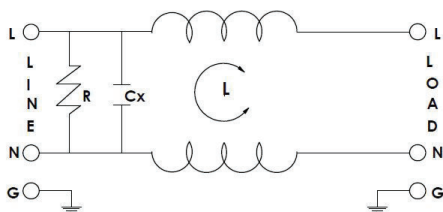
Features

- Designed for Common Mode Emissions or Susceptibility Applications
- Integral IEC Connector in space-efficient package
- Low-cost design
- Low leakage Current
- Available in 1A to 15A Current ratings

Applications

- Medical and home healthcare equipment
- Laboratory and test equipment
- Commercial equipment and household appliances

Electrical Schematic



Technical Data

- Max Rated Voltage: 250VAC @ 50/60Hz
- Rated Current: 1A to 10A @ 40°C
15A @ 40°C (UL,cUL)
- Hipot Rating: L/N 1450VDC
L/G, N/G 2000VAC/ 2250VDC
- Protection Level: IP40 according to IEC 60529
- Leakage Current: <math><5\mu\text{A}</math> @ 250VAC/50Hz
- Temperature Rating: -25°C to +85°C (25/85/21)
- Safety Approvals: UL60939-2
CSA C22.2 No.8 (50°C)
IEC/EN 60939
- Flammability Rating: UL 94V-0

Approvals



(except 15A model)





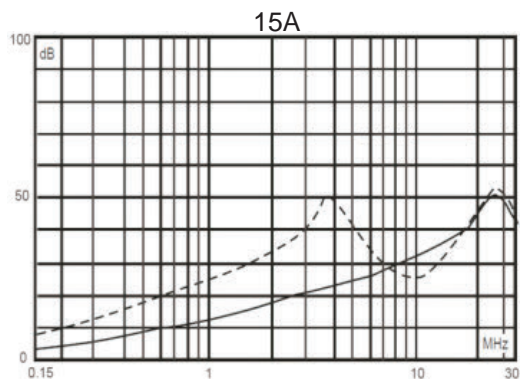
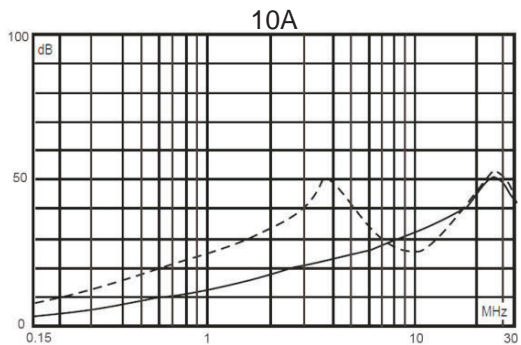
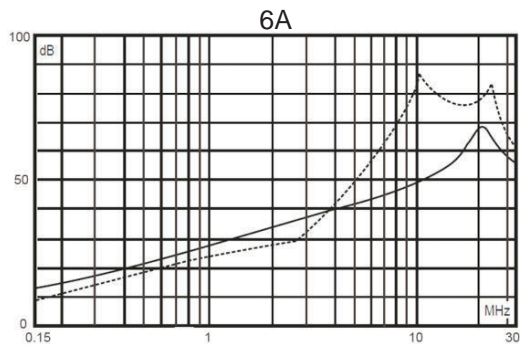
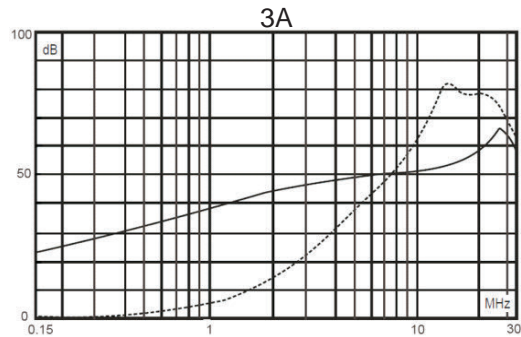
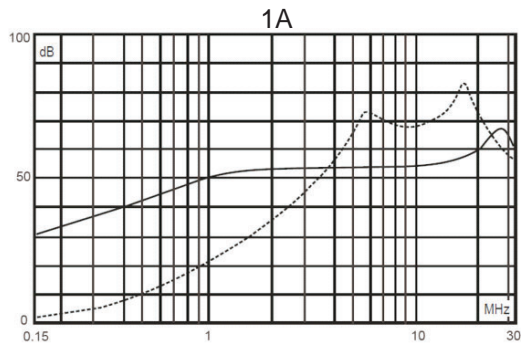
F3400 Series

Model No.	Rated Current @40°C	Load Terminals	Mounting	Leakage Current 250V/50Hz	MAX Rated Voltage	Operating Frequency (Hz)
F3400CA01	1A	QC	Flange	< 5 μA	250 VAC	50/60 Hz
F3400CA03	3A	QC	Flange	< 5 μA	250 VAC	50/60 Hz
F3400CA06	6A	QC	Flange	< 5 μA	250 VAC	50/60 Hz
F3400CA10	10A	QC	Flange	< 5 μA	250 VAC	50/60 Hz
F3400CA15	15A	QC	Flange	< 5 μA	250 VAC	50/60 Hz

Performance

Insertion Loss (typ)

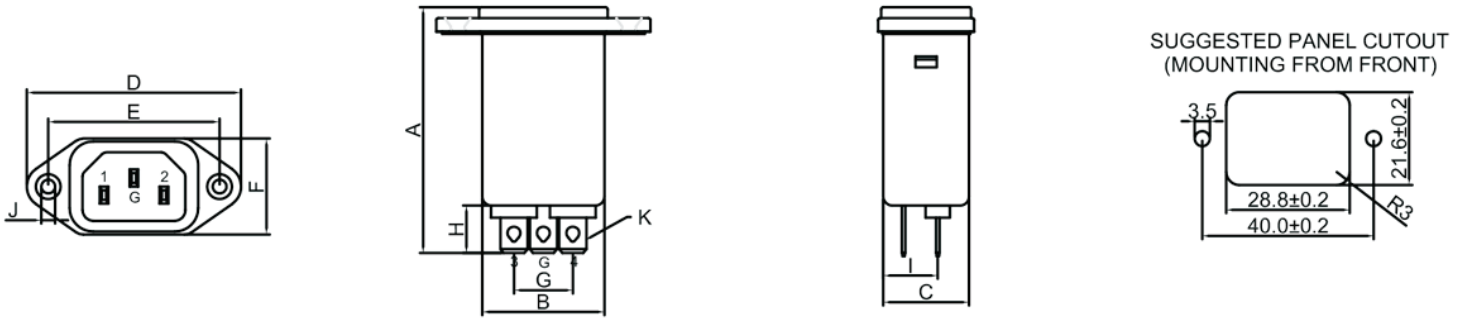
———— (Common Mode) - - - - - (Differential Mode)





F3400 Series

Outline Drawing, Dimensions & Panel Cutout



Mounting Type	A	B	C	D	E	F	G	H	I	J	K
Flange	58	28.5	21	50	40	22.4	12.7	11.8	13.5	3.2	6.35 * 0.8