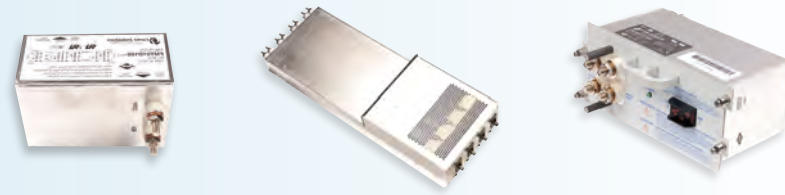


EMI/RFI Filters Continued

DC / Telecom Filters

- Compact Enclosure Design
- Exceeds all NEBS Requirements
- Circuit Breakers
- Hot Pluggable Connectors
- Reverse Polarity Protection
- Rack Mounted



Three-Phase Filters

- Effective Noise Suppression in the Critical 150kHz-30MHz Range
- EMC Solutions Up to 600A at 600VAC
- 2-stage Filter Line Supports Both Delta and Wye Connected Loads



Medical Filters

- UL/IEC 60601-1
- Multi-Function Combinations
- General Purpose Filtered Modules



Appliance Filters

- UL1283, IEC 60939-2
- IEC Modules – 250 VAC, 15A Max
- Single Phase, 3-Phase, DC



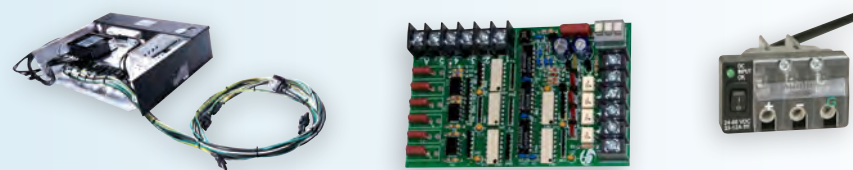
Military/High-Reliability

- TEMPEST
- ITAR
- MIL-PRF-15733 & MIL-PRF-28861 Compliant
- MIL-STD-461 Compliance Applications



Assembly

- Custom Electronics
- Cable/Harness Assemblies
- Printed Circuit Boards



Who We Are

Curtis Industries, founded in 1935, is a leading global manufacturer of terminal blocks, EMI/RFI filters and related electronic devices to small businesses, OEMs, Fortune 500 and Military Corporations alike. Corporate headquarters is in Milwaukee, Wisconsin USA with manufacturing facilities in Milwaukee, Mexico and China.

What We Do

Curtis Industries' key market differentiator is solving complex technical challenges for prominent OEM clients. Our engineering organization takes on the role of consultant-analyst to propose unique and compelling product and device solutions for the Instrumentation, Power Supply, Telecom, Medical, Fitness, Appliance, Machinery Control, and Military/Aerospace industries.

How We Do It

Curtis establishes collaborative design and development partnerships to support next generation OEM product design. Implementing Lean Six-Sigma principles guided by ISO 9001:2008 certified processes, Curtis is committed to continuous improvement, superior quality, cost containment and, ultimately, customer satisfaction. If you need a specific solution for a new product or platform, please call us @ (800) 657-0853 to get started.

Innovative Engineering Solutions



www.tri-mag.com



www.filternetworks.com

2400 S. 43rd Street
PO Box 343925
Milwaukee, WI 53234-3925
800.657.0853
Fax: 414.649.4279
www.curtisind.com



Terminal Blocks

Barrier Terminal Blocks – Single Row

- .25" (6.35mm) to .4375" (11.11mm)
- Centerline Terminal Blocks, Open or Tri-Barrier
- Through-Panel or Feed-Through Applications
- Up to 26 Positions



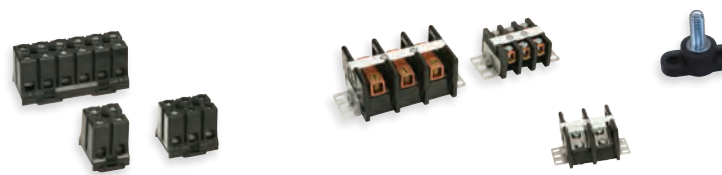
Barrier Terminal Blocks – Double Row

- .375" (9.52mm) to .562" (14.29mm)
- High-Temperature Terminal Blocks
- 15 Amp to 50+ Amp
- 14 AWG to 22 AWG



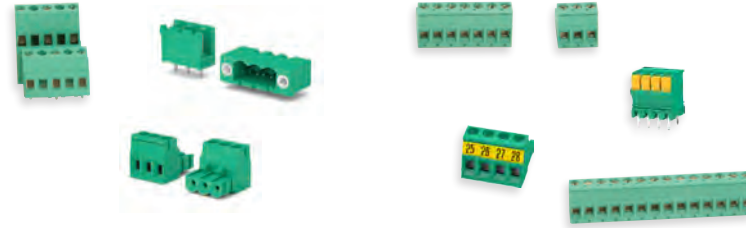
High-Voltage/Current Terminal Blocks

- .375" (9.52mm) to 2.42" (61.47mm)
- Heavy-Load Terminal Blocks
- Rated Up to 600 Volts at 250 Amps
- DIN Rail or Base Mount
- Up to 30 Terminals



European Style Terminal Blocks

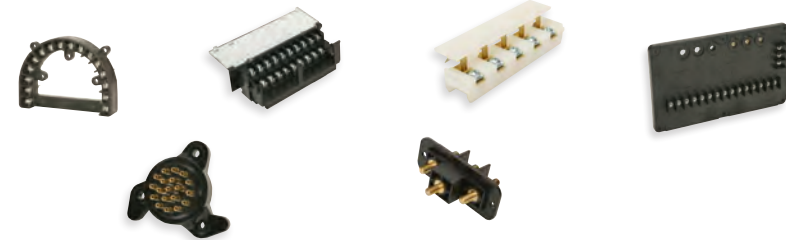
- Single and Multiple Row Terminal Blocks
- Connectors and Headers
- Spring-Loaded Terminations for Quick Installation
- Metric and Imperial Pitches
- High-Temperature Material Options
- Non-Ferrous, Copper Alloy Metal Components
- Various Color, Marking and Polarization Options



PC Board (Euro-style) blocks and connectors are available in various heights (min to high) in single, double, and triple-level configurations, male or female connectors, 30 to 10 AWG.

Design-Specific Wiring

- Insert Molding
- Labor Efficient Designs
- Precision Tolerances
- Custom Configurations & Markings



EMI/RFI Filters

Single-Phase Filters

- General Purpose
- High Performance/Switching
- Wide Band



Power Entry Modules

- General Purpose Filtered Modules
- Power Entry Standard Cutouts
- Multi-Function Combinations



Molding

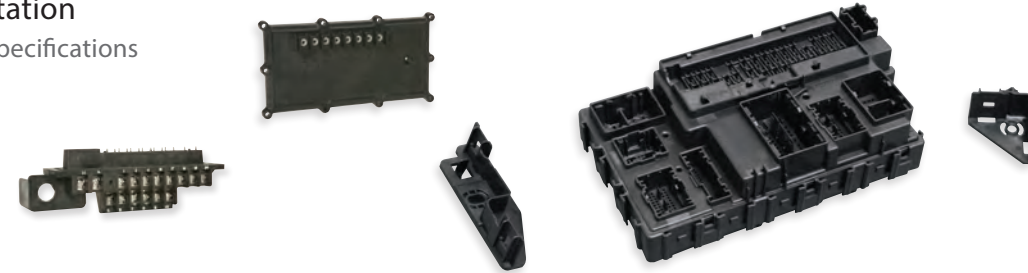
Custom Molding

- Vertical and Horizontal Molding
- Design and Prototyping
- Engineering Grade Thermoplastic Resins
- Injection and Transfer Molded and Thermoset Resins
- Insert Molding



Automotive/Transportation

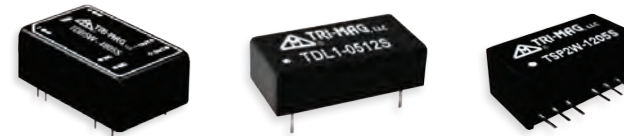
- Customer and Industry Specifications
- Precision Molding
- Global Manufacturing



TRI-MAG DC-DC Converters

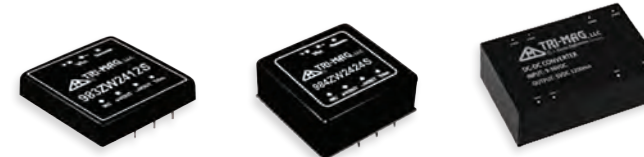
Low Wattage

- 1-5 Watts
- Up to 6000 Vdc Isolation
- SIP and DIP Packages
- Single and Dual Outputs
- -40°C to 85°C Operating Temperature Range



Mid Range

- 6-60 Watts
- Up to 3000 Vdc Isolation
- 1:2 and 1:4 Input Ranges
- Single and Dual Outputs
- -40°C to 85°C Operating Temperature Range



Bricks

- 1/16, 1/8, 1/4, 1/2 and Full Brick Packages
- 60 – 700 Watts
- 1:2 and 1:4 Input Ranges
- 1500 Vdc Isolation
- -40° to 85°/100°C Operating Temperature Ranges
- Adjustable Output Voltages
- UL 60950 Approvals on Selected Models



TRI-MAG Power Supplies

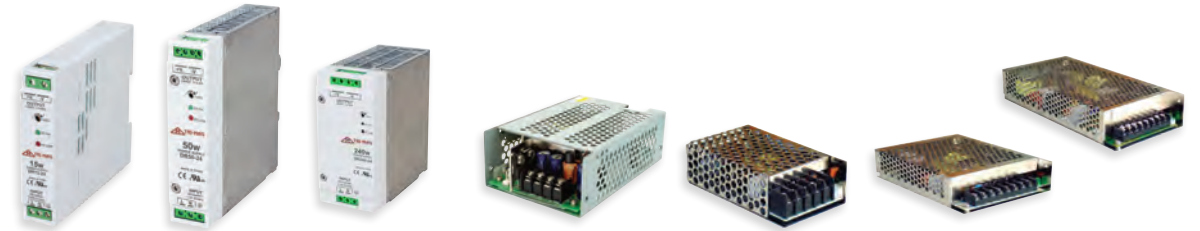
Power Supplies

- Medical and ITE Safety Approvals
- Level VI External Power Supplies from 6W to 300W
- Open-Frame and Enclosed Power Supplies 40W to 800W
- Design to Customer Specifications

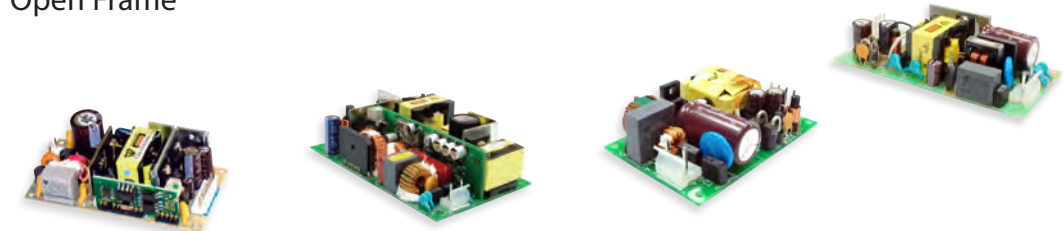
Gaming



Industrial PS



Open Frame



Level VI, External, ITE Adaptors and Desktop



Medical Level VI, External, Adaptors and Desktop

- 6 - 300 Watts
- High Efficiency, DOE Level VI Compliant
- Universal Inputs: 90-264Vac, 47-63Hz
- ANSI/AAMI/IEC/EN ES60601-1:2012 Approved
- Class I and Class II designs

