



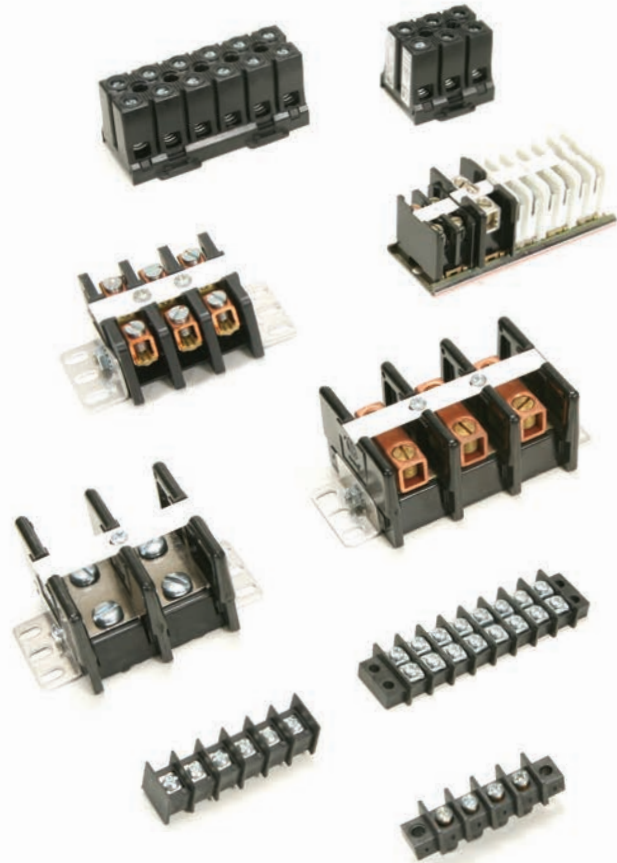
**Curtis Industries**  
A Div. of Powers Holdings, Inc.

## Barrier Terminal Blocks - Single Row

- > .25" (6.35mm) to .4375" (11.11mm)
- > Centerline Terminal Blocks, Open or Tri-Barrier
- > Through-Panel or Feed-Through Applications
- > From One to 26 Positions

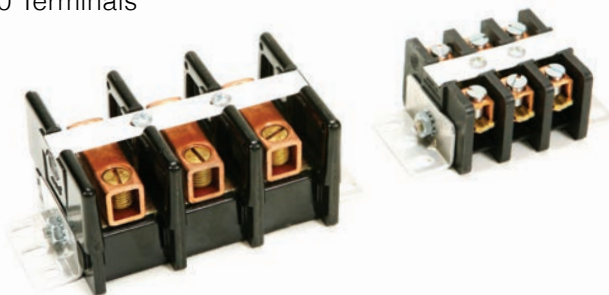
## Barrier Terminal Blocks - Dual Row

- > .375" (9.52mm) to .562" (14.29mm)
- > Hi-Temperature Terminal Blocks
- > 15 Amp to 50+ Amp
- > 14 AWG to 22 AWG



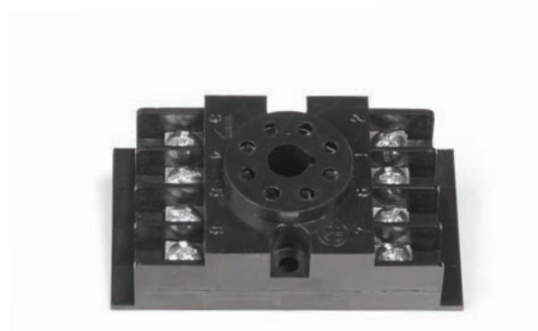
## Hi-Voltage/Current Terminal Blocks

- > .375" (9.52mm) to 2.42" (61.47mm)
- > Heavy-Load Terminal Blocks
- > Rated Up to 600 Volts at 250 Amps
- > DIN Rail or Base Mount
- > One to 30 Terminals



## Relay Sockets

- > 8 and 11 Pin Octal-Type Base
- > 5, 12 and 16 Pin Square Base



DIN Rail style blocks are available in single, dual, and triple-level configurations, 5 to 26mm and cut-to-length sizes.

PC Board (Euro-style) blocks and connectors are available in various heights (min to high) in single, double, and triple-level configurations, male or female connectors, 30 to 10 AWG.

## Single-Phase Filters

- > General Purpose
- > High Performance/Switching
- > Wide Band



## Power Entry Modules

- > General Purpose Filtered Modules
- > Power Entry Standard Cutouts
- > Multi-Function Combinations



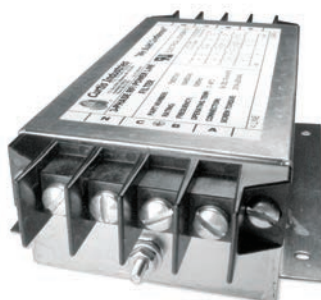
## DC Filters

- > Compact Enclosure Design
- > Applications Up to 100 Amps
- > Exceeds all NEBS requirements through the 10 KHz to 30 MHz conducted emissions spectrum.



## Three-Phase Filters

- > Effective Noise Suppression in the Critical 150kHz-30MHz Range
- > EMC Solutions Up to 600A at 600VAC
- > 2-stage Filter Line Supports Both Delta and Wye Connected Loads



## Filter Networks

Curtis Industries makes a wide variety of military grade products for ground, naval and airborne mission-critical applications.

- > Filters
- > Inductors, Transformers and Chokes
- > Surge Arrestors and Suppressors
- > Filtered Connectors



## Medical Filters

- > Multi-Function Combinations
- > General Purpose Filtered Modules





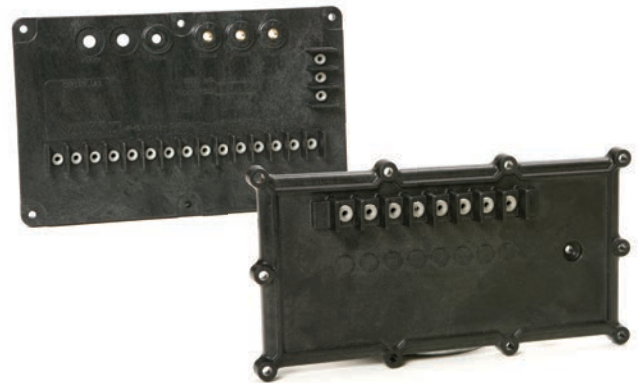
## Custom Molding

- > Vertical and Horizontal Molding
- > Design
- > Prototyping
- > Insert Molding



## Transportation

- > Customer and Industry Specifications
- > Precision Molding
- > Global Manufacturing



## Design-Specific Wiring

- > Insert Molding
- > Labor Efficient Designs
- > Precision Tolerances
- > Custom Configurations & Markings



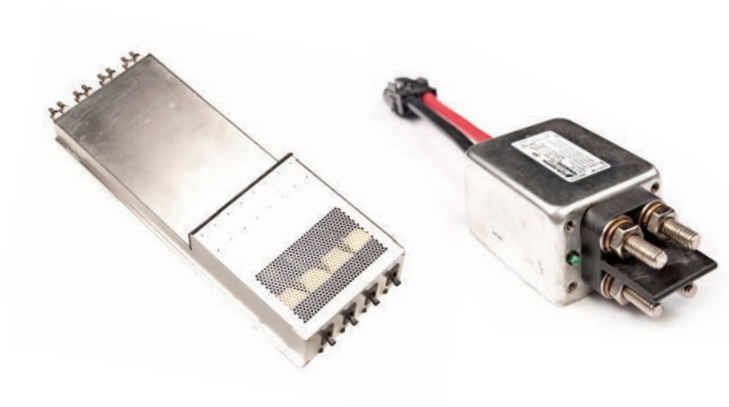
## Appliance/Medical

- > UL1283, UL2601, IEC 60939-2
- > IEC Modules – 250 VAC, 15A Max
- > Single Phase, 3-Phase, DC



## Telecom

- > Circuit Breakers
- > Hot Pluggable Connectors
- > Reverse Polarity Protection
- > Rack Mounted



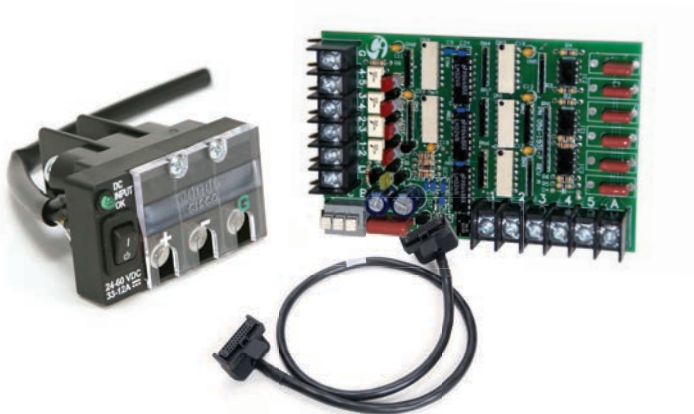
## Military/Hi-Reliability

- > TEMPEST
- > ITAR
- > MIL-PRF-15733 & MIL-PRF-28861 Compliant
- > MIL-STD-461 Compliance Applications



## Assembly

- > Custom Electronics
- > Cable/Harness Assemblies
- > Printed Circuit Boards



CSA certified.



UL approved.

## Who We Are

Curtis Industries, founded in 1933, is a leading global manufacturer of terminal blocks, EMI/RFI filters and related electronic devices to small businesses, OEMs, Fortune 500 and Military Corporations alike. Corporate headquarters are in Milwaukee, Wisconsin USA with manufacturing facilities in Milwaukee, Mexico and China.

## What We Do

Curtis Industries' key market differentiator is solving complex technical challenges for prominent OEM clients. Our engineering organization takes on the role of consultant-analyst to propose unique and compelling product and device solutions for the Instrumentation, Power Supply, Telecom, Medical, Fitness, Appliance, Machinery Control, and Military/Aerospace industries.

## How We Do It

Curtis establishes collaborative design and development partnerships to support next generation OEM product design. Implementing Lean Six-Sigma principles guided by ISO 9001:2008 certified processes, Curtis is committed to continuous improvement, superior quality, cost containment and, ultimately, customer satisfaction. If you need a specific solution for a new product or platform, please call us @ (414) 649-4200 to get started.



**Curtis Industries**  
A Div. of Powers Holdings, Inc.

2400 S. 43rd. St.  
Milwaukee, WI 53219

1-800-657-0853  
[www.curtisind.com](http://www.curtisind.com)