

# Series 5600

.562", 14.29mm Center-to-Center Spacing




**Current Rating:**

50A with #8 or #10 screw and ring lug  
 40A with #10 screw  
 35A with #8 Screw

**Voltage Rating:** CSA & UL : up to 600V

**Breakdown Voltage:**

Terminal - Terminal 7,500Vrms Typ.  
 Terminal - Ground 6,000Vrms Typ.

 **Recognized under the Components Program of Underwriters Laboratories, Inc. Standard 1059, Guide No. XCFR2, File No. E62557.**  
 **Guide No. 22.2 No. 158, Report No. LR39186-1.**  
 **Designed to meet IEC 947-7-1**

**No. of Terminals:** 1 thru 22

**Wire Range:** No. 22AWG to No. 8AWG (No. 8 with ring lug for #10 screw only)

**Tightening Torque:** 16 in.-lbs. with #8 screws  
20 in.-lbs. with #10 screws

**Housing:**

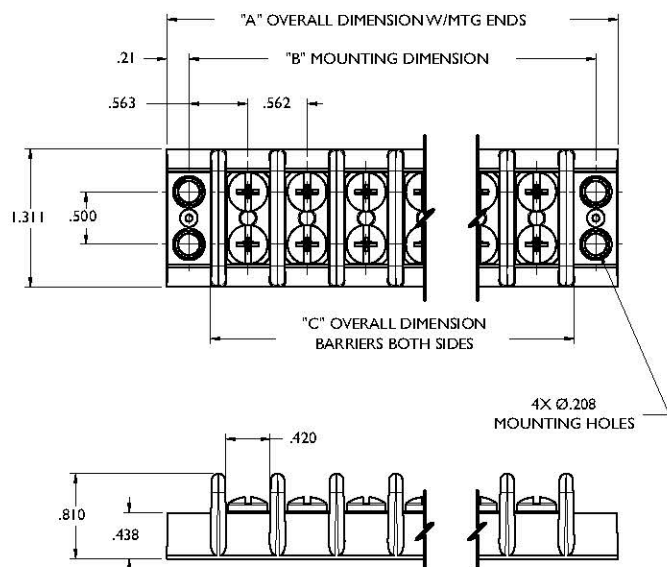
Material	Phenolic
Continuous Use Temp. (UL Index)	-30°C to 150°C (-22°F to 302°F)
Flammability Rating	UL 94V-0

**Features:**

- **Durable, Hi-Temp, phenolic**, self-extinguishing, resists breakage and conforms to UL94V-0
- **Terminal Flexibility**, ideal for surface mount, sub-panel or chassis connections.
- **Economical Closed-Bottom Design**, does not require costly insulation strip.
- **Options**, 8-32 or 10-32 external twin screws. Variations include double solder lug, single solder lug, wire wrap and printed circuit pin.
- **UL Electrical Ratings**,  
Field Wiring to 40A.  
Factory Wiring to 50A.
- **Recognition and Listing**, UL recognized and CSA certified.
- **GWFI UL rating**, (Glow Wire Flammability) of 850C in accordance with UL Standard 746C.

## Mechanical Drawing

## Series 5600 Dimensions



Number of Terminals	Dimensions	
	"B" (Min-Max) Mounting Dim.	"A" (Min-Max) Overall Dim. w/ Mounting Ends
1	1.131–1.119	1.551–1.539
2	1.694–1.682	2.116–2.100
3	2.258–2.242	2.680–2.660
4	2.823–2.803	3.245–3.221
5	3.387–3.363	3.809–3.781
6	3.952–3.924	4.374–4.342
7	4.516–4.484	4.938–4.902
8	5.081–5.045	5.503–5.463
9	5.645–5.605	6.067–6.023
10	6.210–6.166	6.632–6.584
11	6.774–6.726	7.196–7.144
12	7.339–7.287	7.761–7.705
13	7.903–7.847	8.325–8.265
14	8.468–8.408	8.888–8.828
15	9.030–8.970	9.452–9.388
16	9.595–9.531	10.017–9.949
17	10.159–10.091	10.581–10.509
18	10.724–10.652	11.146–11.070
19	11.288–11.212	11.710–11.630
20	11.853–11.773	12.273–12.193
21	12.415–12.335	12.837–12.753
22	12.978–12.898	13.402–13.314

Dimensions Shown are  $\pm 0.030$ "

## Part Number

*How to Order*    56   X   X   X   X   XX   X

**MOLDING DESIGN ]**

- 1 = Without Mounting Ends
- 2 = With Mounting Ends
- 5 Thru 9 to be assigned.

**TERMINAL DESIGN ]**

Part No. Digit	Terminal Plate Type	Screw Type	Approval	*Field/Factory
0 =	STEEL	STEEL	UL/cUL	2
1 =	STEEL	BRASS	UL	1
2 =	BRASS	STEEL	UL	2
3 =	BRASS	BRASS	UL	1
5 =	BRASS	SSTL	N/A	N/A
6 =	STEEL	SSTL	N/A	N/A
*1 = FACTORY WIRING ONLY 2 = FACTORY & FIELD WIRING				

**SCREW SIZE ]**

- 0 = 8-32 Threaded Screws
- 1 = 10-32 Threaded Screws

**SCREW TYPE ]**

- 0 = Binder Head, Combo Head, Zinc Plated, Steel
- 1 = Binder Head, Combo Head, Nickel Plated, Steel
- 2 = Binder Head, Combo Head, Nickel Plated, Brass
- 3 = Combo Head, Stainless Steel
- 4 = Wire Clamp, Combo Head, Zinc Plated, Steel
- 5 = Screws Shipped Bulk
- 6 = Quick Connect Tabs with Binder Head, Zinc Plated, Steel
- 7 = Wire Clamp, Combo Head, Nickel Plated, Steel
- 8 = Wire Clamp, Combo Head, Nickel Plated, Brass

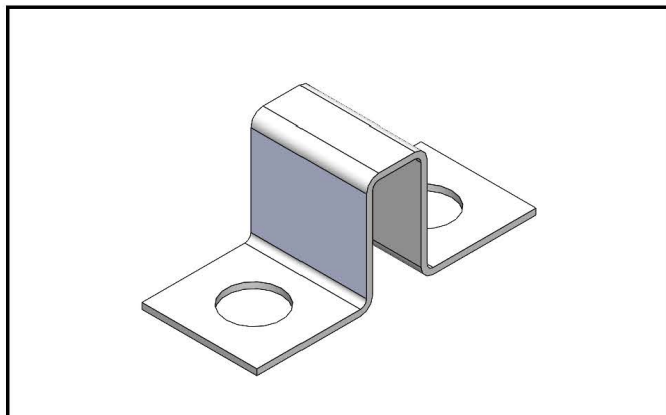
**[ SPECIALS OR OPTIONAL DESIGNS**

- 0 = None
- A-Z = Custom Configuration

**[ NUMBER OF POLES AVAILABLE**

- Available
- 01-22 w/ Mounting Ends
- 01-22 w/ Barriers Both Ends

## Accessories



Part No. 068103200

**TERMINAL BLOCK JUMPERS**

562 Series Jumper – Tin Plated Brass, is designed to jump two adjacent terminals as it is channeled to cross over the barrier top. (068103200)