

REVISION HISTORY				
REV	DESCRIPTION	DATE	CHGD BY	APPV'D
-	RELEASED	8/15/1996	SRS	MTK
A	ECN 6776	5/9/2011	LAW	CJD
B	ECN 7328	8/26/2014	TJP	CJD
C	ECN 7432-2, UPDATE MOLDING PART NUMBERS	12/3/2018	CJB	CJD

MULTI-SCREW DIAGRAM

ASSEMBLY P/N 32500XXX0

SURFACE MOUNT MOLDING
0 = WITH MOUNTING ENDS

(039907600 SURFACE MOUNT
(FLUSH) INSERT

SCREW TYPE

0 = 052931700 6-32 x 1/4 PH
COMB., SLT., ST., ZC. PL

1 = 058524700 6-32 X 5/16 SEMS
PH., COMB., SLT., ST., ZC. PL.

2 = 054924120 6-32 X 1/4 PH
COMB., SLT., BRASS, NI. PL.

3 = 058942000 6-32 X 1/4 PH
STAINLESS STEEL

5 = SUPPLIED WITHOUT SCREWS

6 = QUICK CONNECTS
(N/A)

7 = N/A

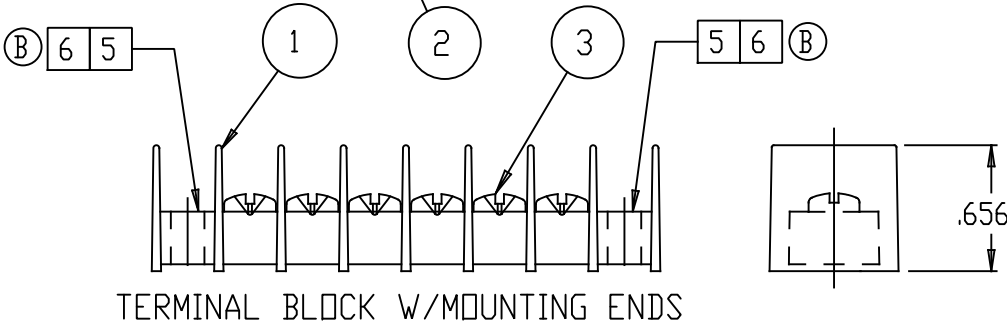
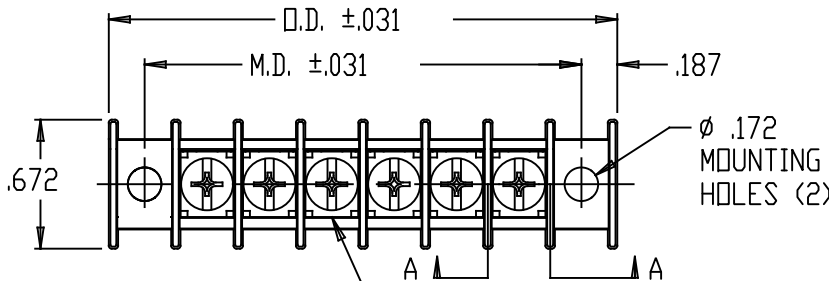
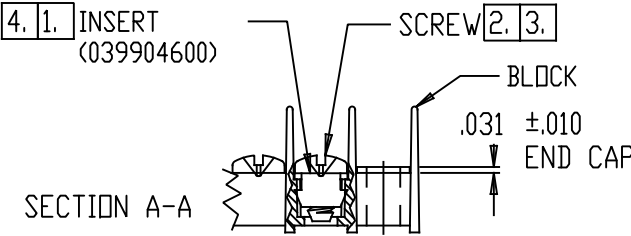
8 = CAPTIVATED SCREW ASM.
(052931700 SCREW)

9 = CAPTIVATED WIRE CLAMP
(058524700 SCREW)

NUMBER OF POLES
(1-28) WITHOUT MOUNTING ENDS

C

ASSEMBLY P/N W/ MOUNTING ENDS	NO. OF TERMINALS	MOLD P/N ITEM (1) W/ MOUNTING ENDS	ITEM 2,3 QUANTITY	DIMENSIONS	
				W/ MOUNTING ENDS M.D. ±.031	W/ MOUNTING ENDS O.D. ±.031
32500X010	1	083250010	1	.650	1.023
32500X020	2	083250020	2	.975	1.348
32500X030	3	083250030	3	1.300	1.673
32500X040	4	083250040	4	1.625	1.998
32500X050	5	083250050	5	1.950	2.323
32500X060	6	083250060	6	2.275	2.648
32500X070	7	083250070	7	2.600	2.973
32500X080	8	083250080	8	2.925	3.298
32500X090	9	083250090	9	3.250	3.623
32500X100	10	083250100	10	3.575	3.948
32500X110	11	083250110	11	3.900	4.273
32500X120	12	083250120	12	4.225	4.598
32500X130	13	083250130	13	4.550	4.923
32500X140	14	083250140	14	4.875	5.248
32500X150	15	083250150	15	5.200	5.573
32500X160	16	083250160	16	5.525	5.898
32500X170	17	083250170	17	5.850	6.223
32500X180	18	083250180	18	6.175	6.548
32500X190	19	083250190	19	6.500	6.873
32500X200	20	083250200	20	6.825	7.198
32500X210	21	083250210	21	7.150	7.523
32500X220	22	083250220	22	7.475	7.848
32500X230	23	083250230	23	7.800	8.173
32500X240	24	083250240	24	8.125	8.498
32500X250	25	083250250	25	8.450	8.823
32500X260	26	083250260	26	8.775	9.148



NOTES:

1 INSERT .004 ABOVE TO .006 DEPRESSED RELATIVE TO MOLDING SURFACE.

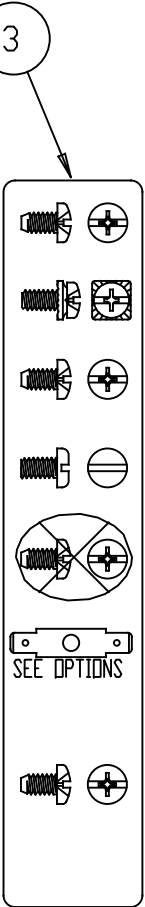
2 ASSEMBLY SCREW TORQUE 2 TO 4 IN-LB.

3 APPLICATION TORQUE 9 IN-LB.

4 INSERT PULL-OUT FORCE 14 LBS MIN

5 MOUNTING END CAPS ARE USED AS REQUIRED, ONLY IF THE MOUNTING ENDS HAVE NOT ALREADY BEEN MOLDED-IN.

6 CRITICAL TO QUALITY: BOTH ENDS OF EACH BLOCK ASSEMBLY MUST HAVE EITHER MOLDED-IN MOUNTING ENDS OR MOUNTING END CAPS. ONE ASSEMBLY CANNOT HAVE ONE MOLDED-IN MOUNTING END AND ONE MOUNTING END CAP. ADDITIONALLY, ASSEMBLIES USING DIFFERENT TYPES OF MOUNTING ENDS CANNOT BE MIXED WITHIN A SINGLE ORDER.



4	083250000	.325 TERM BLK MOUNTING END CAP	A/R	5 6	6
3	XXXXXXXXX	SCREW (SEE MULTI-SCREW DIAGRAM)	SEE TABLE		
2	039907600	SURFACE MOUNT (FLUSH) INSERT	SEE TABLE		
1	SEE TABLE	MOLDING, BASE MOUNTED	1		
ITEM	PART NO.	DESCRIPTION	QTY		

CAD FILENAME: 32500XXX0 RevC B.dwg

PREVIOUS P/N: NONE

UNLESS OTHERWISE
SPECIFIED DIMENSIONS
ARE IN INCHES (mm).
TOLERANCES ARE:

∠ TOL. = ±0°30'
.XX TOL. = ±.01
.XXX TOL. = ±.005

FINISH N/A

MATERIAL SEE B.O.M.

PROPRIETARY & CONFIDENTIAL
TO CURTIS INDUSTRIES.

THE INFORMATION CONTAINED IN
THIS DRAWING IS THE SOLE
PROPERTY OF CURTIS INDUSTRIES.
ANY REPRODUCTION IN PART OR AS
A WHOLE WITHOUT THE WRITTEN
PERMISSION OF CURTIS INDUSTRIES
IS PROHIBITED.



2400 South 43rd Street
Milwaukee, WI 53219
Phone: (414) 649-4200
www.curtisind.com

TITLE .325 SURFACE MOUNT W/ MTG ENDS
(FLUSH MT'D INSERT 039907600)

SCALE N/A DRAWN SRS CHECKED MTK DATE 8/15/1996

SIZE B SHT. 1 OF 1 DWG NO. 32500XXX0 REV. C