

REVISION HISTORY				
REV	DESCRIPTION	DATE	CHGD BY	APPV'D
-	RELEASED	11/20/1974	SRS	RJF
L	ECN 7741, MULTIPLE UPDATES	11/5/2018	CJB	CJD
M	ECN 7741-1, ADD ITEM 2 AND ADD NOTE 2	11/13/2018	CJB	CJD

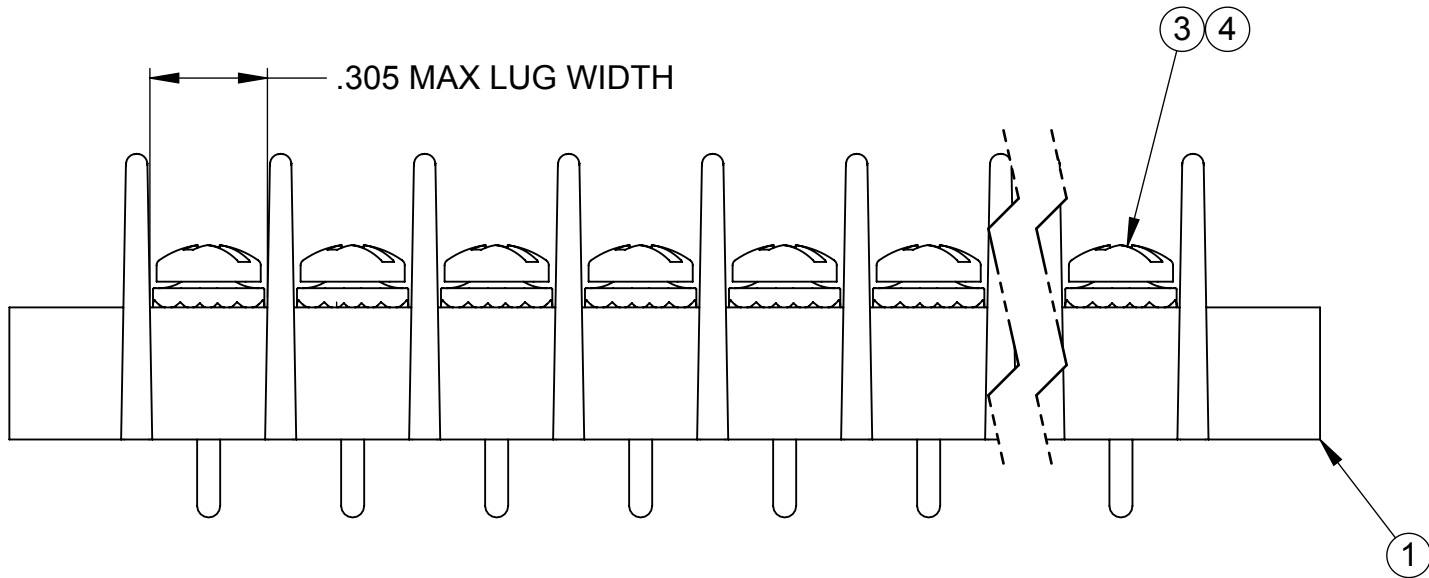
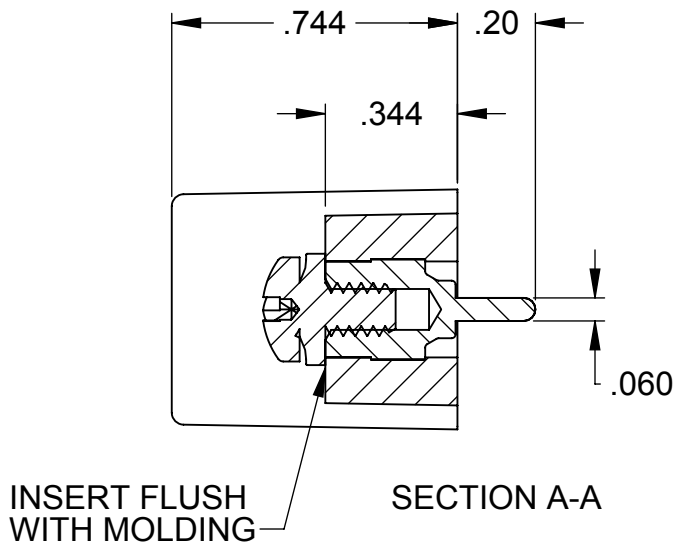
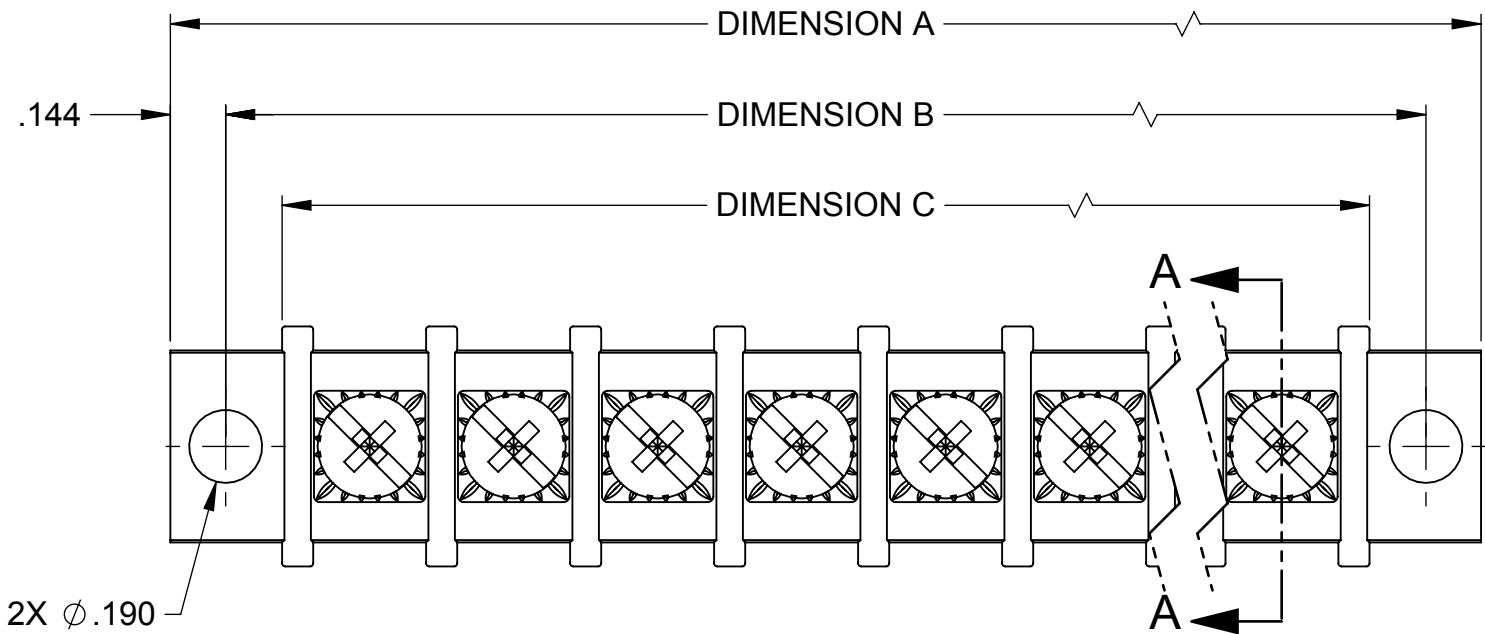


TABLE A					
NO. OF POLES	QTY. OF INSERT (ITEM 1)	QTY. OF SCREW (ITEM 2, 3, OR 4)	DIMENSION A ±.015	DIMENSION B ±.015	DIMENSION C ±.030
1	1	1	1.038	.750	.457
2	2	2	1.413	1.125	.832
3	3	3	1.788	1.500	1.207
4	4	4	2.163	1.875	1.582
5	5	5	2.538	2.250	1.957
6	6	6	2.913	2.625	2.332
7	7	7	3.288	3.000	2.707
8	8	8	3.663	3.375	3.082
9	9	9	4.038	3.750	3.457
10	10	10	4.413	4.125	3.832
11	11	11	4.788	4.500	4.207
12	12	12	5.163	4.875	4.582
13	13	13	5.538	5.250	4.957
14	14	14	5.913	5.625	5.332
15	15	15	6.288	6.000	5.707
16	16	16	6.663	6.375	6.082
17	17	17	7.038	6.750	6.457
18	18	18	7.413	7.125	6.832
19	19	19	7.788	7.500	7.207
20	20	20	8.163	7.875	7.582
21	21	21	8.538	8.250	7.957
22	22	22	8.913	8.625	8.332
23	23	23	9.288	9.000	8.707
24	24	24	9.663	9.375	9.082
25	25	25	10.038	9.750	9.457
26	26	26	10.413	10.125	9.832


NOTES:

- SEE TABLE A FOR QUANTITY OF SCREWS (ITEM 3 OR 4) TO BE USED IN B.O.M. FOR EACH ASSEMBLY.
- WHEN USING QUICK-CONNECT TERMINALS, USE 1/4" SCREW 052866700 (ITEM 3). SEE TAB POSITION VISUAL AID FOR MORE INFORMATION.
- CBP/CBPC TERMINAL BLOCK ASSEMBLY FAMILIES USE SCREW (ITEM 3).
- CBPW/CBPCW TERMINAL BLOCK ASSEMBLY FAMILIES USE SEMS SCREW (ITEM 4).
- BLOCKS WITH MOUNTING ENDS WILL HAVE A "0" IN THE LAST DIGIT POSITION OF THE ASSEMBLY NUMBER. BLOCKS WITHOUT MOUNTING ENDS WILL HAVE A "9" IN THE LAST DIGIT POSITION OF THE ASSEMBLY NUMBER. BLOCKS WITH MOUNTING ENDS AND USING SEMS SCREW WILL HAVE AN "8" IN THE LAST DIGIT POSITION OF THE ASSEMBLY NUMBER. BLOCKS WITHOUT MOUNTING ENDS AND USING SEMS SCREW WILL HAVE AN "89" IN THE LAST TWO DIGIT POSITIONS OF THE ASSEMBLY NUMBER.

FOR EXAMPLE:
A CBP 6-POLE BLOCK WITH MOUNTING ENDS IS **278606000**
A CBPC 6-POLE BLOCK WITHOUT MOUNTING ENDS IS **278606009**
A CBPW 6-POLE BLOCK WITH MOUNTING ENDS AND WITH SEMS SCREWS IS **278606008**
A CBPCW 6-POLE BLOCK WITHOUT MOUNTING ENDS AND WITH SEMS SCREWS IS **278606089**

USE DIMENSION "A" AS THE OVERALL LENGTH OF BLOCKS WITH MOUNTING ENDS AND DIMENSION "C" AS THE OVERALL LENGTH OF BLOCKS WITHOUT MOUNTING ENDS.

SEE TABLE A	058523700	6-32 X 1/4 LG. TEETER TERMINAL CLAMP SCR.	4
SEE TABLE A	052866700	6-32 X 1/4 BH, COMBO STL, ZN PL	3
SEE TABLE A	052853700	SCREW, 6-32 X 3/16, BD HD	2
SEE TABLE A	0786XX000	CBP MOLDING, BLACK, WITH INSERT	1
QTY.	PART NO.	DESCRIPTION	ITEM

CADFILE NAME: 2786XXXXX RevM C.sldrw		<div><div>2400 South 43rd Street Milwaukee, WI 53219 Phone: (414) 649-4200 www.curtisind.com</div><div>A division of Powers Holdings, Inc.</div></div>																			
PREVIOUS P/N: NONE																					
<div>UNLESS OTHERWISE SPECIFIED DIMENSIONS ARE IN INCHES. TOLERANCES ARE: <div>✓ TOL. = 0° 30' .XX TOL. = ±.01 .XXX TOL. = ±.005</div></div>		<div>PROPRIETARY & CONFIDENTIAL TO CURTIS INDUSTRIES. THE INFORMATION CONTAINED IN THIS DRAWING IS THE SOLE PROPERTY OF CURTIS INDUSTRIES. ANY REPRODUCTION IN PART OR AS A WHOLE WITHOUT THE WRITTEN PERMISSION OF CURTIS INDUSTRIES IS PROHIBITED.</div>		<div>TITLE CBP/CBPC/CBPW/CBPCW TERMINAL BLOCK ASSEMBLY</div> <table><tr><td>SCALE</td><td>2:1</td><td>DRAWN</td><td>SRS</td><td>CHECKED</td><td>RJF</td><td>DATE</td><td>11/20/1974</td></tr><tr><td>SIZE</td><td>C</td><td>SHT 1 OF 1</td><td>DWG. NO.</td><td colspan="3">2786XXXXX</td><td>REV. M</td></tr></table>		SCALE	2:1	DRAWN	SRS	CHECKED	RJF	DATE	11/20/1974	SIZE	C	SHT 1 OF 1	DWG. NO.	2786XXXXX			REV. M
SCALE	2:1	DRAWN	SRS			CHECKED	RJF	DATE	11/20/1974												
SIZE	C	SHT 1 OF 1	DWG. NO.			2786XXXXX			REV. M												
FINISH N/A																					
MATERIAL SEE B.O.M.																					