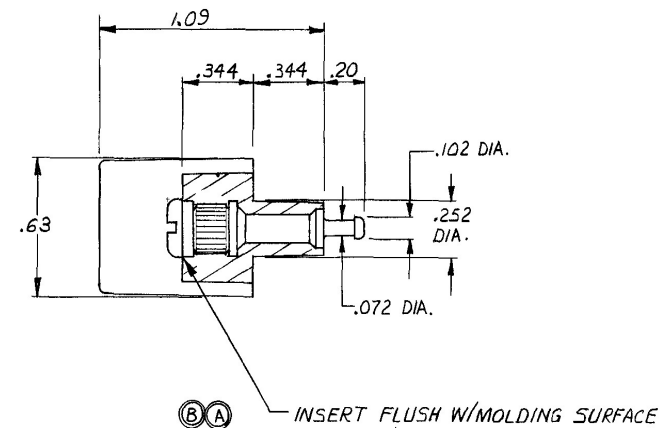
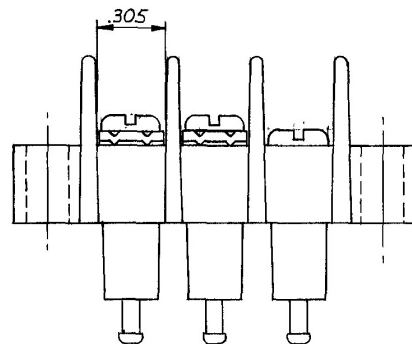
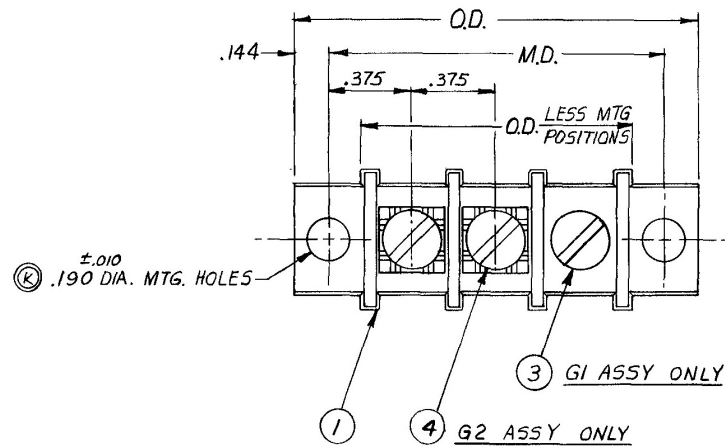


REVISION HISTORY

REV	DESCRIPTION	DATE	CHGD BY	APP'VD
K	ECN 2645	6/20/86	SRS	PJF
L	ECN 3047	12/28/90	SRS	PJF
M	ECN 7372	12/1/14	TJP	PJF
N	ECN 7815, CHANGED DRAWING P/N	8/13/2019	MRJ	CJD



(G1) TYPE "CFT" TERMINAL BLOCK ASSEMBLY, B/M 27800_000

(G2) TYPE "CFTW" TERM. BLK. ASSEMBLY, B/M 27800_008
W/ TERMINAL CLAMP

SAME AS (G1) EXCEPTED IT. (3) REPLACED BY IT. (4)
W/TERMINAL CLAMP.

SEE SHEET 2 FOR P/L.

CADFILE NAME: 2780XX00X RevN B.slddrw

PREVIOUS P/N: NONE

UNLESS OTHERWISE
SPECIFIED DIMENSIONS
ARE IN INCHES.
TOLERANCES ARE:

< TOL. = 0° 30'
.XX TOL. = ±.01
.XXX TOL. = ±.005

FINISH

N/A

MATERIAL

N/A

PROPRIETARY & CONFIDENTIAL
TO CURTIS INDUSTRIES.

THE INFORMATION CONTAINED IN
THIS DRAWING IS THE SOLE
PROPERTY OF CURTIS INDUSTRIES.
ANY REPRODUCTION IN PART OR AS
A WHOLE WITHOUT THE WRITTEN
PERMISSION OF CURTIS INDUSTRIES
IS PROHIBITED.

CURTIS
INDUSTRIES

A division of Powers Holdings, Inc.

2400 South 43rd Street
Milwaukee, WI 53219
Phone: (414) 649-4200
www.curtisind.com

TITLE

TYPE CFT TERMINAL
BLOCK ASSEMBLY

SCALE

N/A

DRAWN

MRJ

CHECKED

CJD

DATE

8/13/2019

SIZE

B

SHT 1
OF 2

DWG.
NO.

(N)

2780XX00X

REV.

N

(G1) TYPE "CFT" TERMINAL BLOCK ASSEMBLY, B/M 27800_000

(G2) TYPE "CFTW" TERMINAL BLOCK ASSEMBLY, B/M 27800_008
W/TERMINAL CLAMP

SAME AS (G1) EXCEPT IT. (3) REPLACED BY
IT. (4) W/TERMINAL CLAMP.

SEE SHEET 1 FOR DETAILS

TYPE NO.	PART NO. FOR MOLDING																										
	O.D. $\pm .031$ LESS MT'G. POSITION	$\pm .031$ O.D.																									
M.D. $\pm .031$																											
CFT-1	.457	78001	1.038	1.413	1.788	2.163	2.538	2.913	3.288	3.663	4.038	4.413	4.788	5.163	5.538	5.913	6.288	6.663	7.038	7.413	7.788	8.163	8.538	8.913	9.288	9.663	10.038
CFT-2	.832	78002	1.413	1.788	2.163	2.538	2.913	3.288	3.663	4.038	4.413	4.788	5.163	5.538	5.913	6.288	6.663	7.038	7.413	7.788	8.163	8.538	8.913	9.288	9.663	10.038	
CFT-3	1.207	78003	1.788	2.163	2.538	2.913	3.288	3.663	4.038	4.413	4.788	5.163	5.538	5.913	6.288	6.663	7.038	7.413	7.788	8.163	8.538	8.913	9.288	9.663	10.038		
CFT-4	1.582	78004	2.163	2.538	2.913	3.288	3.663	4.038	4.413	4.788	5.163	5.538	5.913	6.288	6.663	7.038	7.413	7.788	8.163	8.538	8.913	9.288	9.663	10.038			
CFT-5	1.957	78005	2.538	2.913	3.288	3.663	4.038	4.413	4.788	5.163	5.538	5.913	6.288	6.663	7.038	7.413	7.788	8.163	8.538	8.913	9.288	9.663	10.038				
CFT-6	2.332	78006	2.913	3.288	3.663	4.038	4.413	4.788	5.163	5.538	5.913	6.288	6.663	7.038	7.413	7.788	8.163	8.538	8.913	9.288	9.663	10.038					
CFT-7	2.707	78007	3.288	3.663	4.038	4.413	4.788	5.163	5.538	5.913	6.288	6.663	7.038	7.413	7.788	8.163	8.538	8.913	9.288	9.663	10.038						
CFT-8	3.082	78008	3.663	4.038	4.413	4.788	5.163	5.538	5.913	6.288	6.663	7.038	7.413	7.788	8.163	8.538	8.913	9.288	9.663	10.038							
CFT-9	3.457	78009	4.038	4.413	4.788	5.163	5.538	5.913	6.288	6.663	7.038	7.413	7.788	8.163	8.538	8.913	9.288	9.663	10.038								
CFT-10	3.832	78010	4.413	4.788	5.163	5.538	5.913	6.288	6.663	7.038	7.413	7.788	8.163	8.538	8.913	9.288	9.663	10.038									
CFT-11	4.207	78011	4.788	5.163	5.538	5.913	6.288	6.663	7.038	7.413	7.788	8.163	8.538	8.913	9.288	9.663	10.038										
CFT-12	4.582	78012	5.163	5.538	5.913	6.288	6.663	7.038	7.413	7.788	8.163	8.538	8.913	9.288	9.663	10.038											
CFT-13	4.957	78013	5.538	5.913	6.288	6.663	7.038	7.413	7.788	8.163	8.538	8.913	9.288	9.663	10.038												
CFT-14	5.332	78014	5.913	6.288	6.663	7.038	7.413	7.788	8.163	8.538	8.913	9.288	9.663	10.038													
CFT-15	5.707	78015	6.288	6.663	7.038	7.413	7.788	8.163	8.538	8.913	9.288	9.663	10.038														
CFT-16	6.082	78016	6.663	7.038	7.413	7.788	8.163	8.538	8.913	9.288	9.663	10.038															
CFT-17	6.457	78017	7.038	7.413	7.788	8.163	8.538	8.913	9.288	9.663	10.038																
CFT-18	6.832	78018	7.413	7.788	8.163	8.538	8.913	9.288	9.663	10.038																	
CFT-19	7.207	78019	7.788	8.163	8.538	8.913	9.288	9.663	10.038																		
CFT-20	7.582	78020	8.163	8.538	8.913	9.288	9.663	10.038																			
CFT-21	7.957	78021	8.538	8.913	9.288	9.663	10.038																				
CFT-22	8.332	78022	8.913	9.288	9.663	10.038																					
CFT-23	8.707	78023	9.288	9.663	10.038																						
CFT-24	9.082	78024	9.663	10.038																							
CFT-25	9.457	78025	10.038																								
CFT-26	9.832	78026	10.413																								

IT. NO.	DESCRIPTION OR NAME	P/N NO.	PT. NO.	DWG. NO.	1	2	3	4	5	6	7	8	9	10	11	12	13	14	15	16	17	18	19	20	21	22	23	24	25	26	27	28
1	CFT MOLDING, BLACK, WITH INSERT	SEE ABOVE	—	07800X000	1	1	1	1	1	1	1	1	1	1	1	1	1	1	1	1	1	1	1	1	1	1	1	1	1	1	1	
2					1	2	3	4	5	6	7	8	9	10	11	12	13	14	15	16	17	18	19	20	21	22	23	24	25	26		
3	SCREW, 6-32 x 1/4, BD HD, STL, ZN PLD (G1 ASSY ONLY)			052866700	1	2	3	4	5	6	7	8	9	10	11	12	13	14	15	16	17	18	19	20	21	22	23	24	25	26		
4	SCREW, SEMS, 6-32 x 1/4, STL, ZN PLD (G2 ASSY ONLY)			058523700	1	2	3	4	5	6	7	8	9	10	11	12	13	14	15	16	17	18	19	20	21	22	23	24	25	26		

CADFILE NAME: 2780XX00X RevN B.slddrw

PREVIOUS P/N: NONE

UNLESS OTHERWISE
SPECIFIED DIMENSIONS
ARE IN INCHES.
TOLERANCES ARE:

∠ TOL. = 0° 30'
.XX TOL. = ±.01
.XXX TOL. = ±.005

FINISH

N/A

MATERIAL

N/A

PROPRIETARY & CONFIDENTIAL
TO CURTIS INDUSTRIES.

THE INFORMATION CONTAINED IN
THIS DRAWING IS THE SOLE
PROPERTY OF CURTIS INDUSTRIES.
ANY REPRODUCTION IN PART OR AS
A WHOLE WITHOUT THE WRITTEN
PERMISSION OF CURTIS INDUSTRIES
IS PROHIBITED.

CURTIS
INDUSTRIES

A division of Powers Holdings, Inc.

2400 South 43rd Street
Milwaukee, WI 53219
Phone: (414) 649-4200
www.curtisind.com

TITLE

TYPE CFT TERMINAL
BLOCK ASSEMBLY

SCALE

N/A

DRAWN

MRJ

CHECKED

CJD

DATE

8/13/2019

SIZE

B

SHT 2
OF 2

DWG.
NO.

(N)

2780XX00X

REV.

N