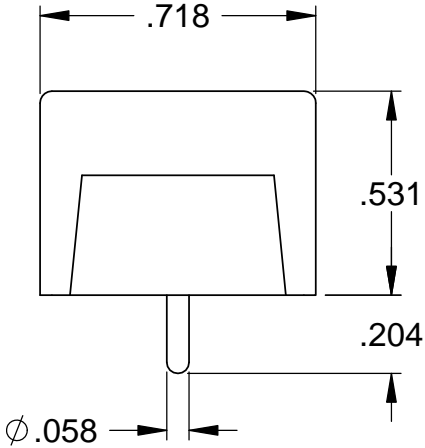


TABLE A

NO. OF POLES	ASSY P/N [3]	MOLDING P/N (ITEM 1) [1] (E)	QTY. OF SCREWS (ITEM 2) [2]	DIM "A" \pm .030	DIM "B" \pm .030	DIM "C" \pm .030
20	26962000X	07962000X	20	9.562	9.187	8.875
21	26962100X	07962100X	21	10.000	9.625	9.312
22	26962200X	07962200X	22	10.437	10.062	9.750
23	26962300X	07962300X	23	10.875	10.500	10.187
24	26962400X	07962400X	24	11.312	10.937	10.625
25	26962500X	07962500X	25	11.750	11.375	11.062
26	26962600X	07962600X	26	12.187	11.812	11.500

REVISION HISTORY				
REV	DESCRIPTION	DATE	CHGD BY	APPV'D
D	ECN 6608, UPDATED & REDRAWN IN CAD	7/14/2008	LAW	
E	ECN 7560, UPDATE MOLDING P/N'S	10/20/2016	CJB	CJD

NOTES:
[1] SEE TABLE A FOR INDIVIDUAL MOLDING PART NUMBERS (ITEM 1) TO BE USED IN B.O.M. FOR EACH ASSEMBLY.
[2] SEE TABLE A FOR QUANTITY OF SCREWS (ITEM 2) TO BE USED IN B.O.M. FOR EACH ASSEMBLY.
[3] BLOCKS WITH MOUNTING ENDS WILL HAVE A "0" IN THE LAST DIGIT POSITION OF THE ASSEMBLY NUMBER. BLOCKS WITHOUT MOUNTING ENDS WILL HAVE A "9" IN THE LAST DIGIT POSITION OF THE ASSEMBLY NUMBER.
FOR EXAMPLE:
A 26-POLE BLOCK WITH MOUNTING ENDS IS **269626000**
A 26-POLE BLOCK WITHOUT MOUNTING ENDS IS **269626009**
USE DIMENSION "A" AS THE OVERALL LENGTH OF BLOCKS WITH MOUNTING ENDS AND DIMENSION "C" AS THE OVERALL LENGTH OF BLOCKS WITHOUT MOUNTING ENDS.



2	052866700	SCREW, 6-32 x 1/4, BD HD, COMBO, STL, ZN PLD	SEE TABLE A
1	SEE TABLE A	MOLDING, GBPX	1
ITEM	PART NO.	DESCRIPTION	QTY.
CADFILE NAME: 26962X00X RevE B.sldrw			
PREVIOUS P/N: NONE			
UNLESS OTHERWISE SPECIFIED DIMENSIONS ARE IN INCHES. TOLERANCES ARE: \angle TOL. = 0° 30' .XX TOL. = \pm .01 .XXX TOL. = \pm .005		PROPRIETARY & CONFIDENTIAL TO CURTIS INDUSTRIES. THE INFORMATION CONTAINED IN THIS DRAWING IS THE SOLE PROPERTY OF CURTIS INDUSTRIES. ANY REPRODUCTION IN PART OR AS A WHOLE WITHOUT THE WRITTEN PERMISSION OF CURTIS INDUSTRIES IS PROHIBITED.	
FINISH N/A		MATERIAL SEE B.O.M.	
SIZE B		SHT 1 OF 1	DWG. NO. 26962X00X
SCALE 2:1		DRAWN LAW	CHECKED DATE 7/14/2008
REV. E		2400 South 43rd Street Milwaukee, WI 53219 Phone: (414) 649-4200 www.curtisind.com	