

REVISION HISTORY				
REV	DESCRIPTION	DATE	CHGD BY	APPV'D
D	ECN 6608, UPDATED & REDRAWN IN CAD	7/14/2008	LAW	
E	ECN 7560, UPDATE MOLDING P/N'S	10/20/2016	CJB	CJD

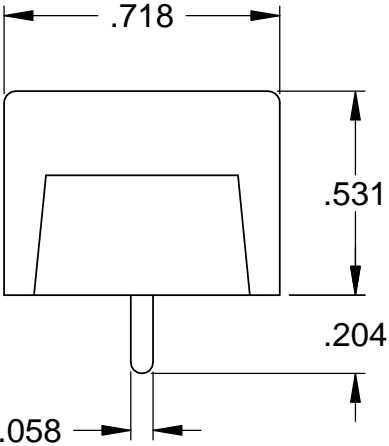
NOTES:

- 1

SEE TABLE A FOR INDIVIDUAL MOLDING PART NUMBERS (ITEM 1) TO BE USED IN B.O.M. FOR EACH ASSEMBLY.
- 2

SEE TABLE A FOR QUANTITY OF SCREWS (ITEM 2) TO BE USED IN B.O.M. FOR EACH ASSEMBLY.
- 3

BLOCKS WITH MOUNTING ENDS WILL HAVE A "0" IN THE LAST DIGIT POSITION OF THE ASSEMBLY NUMBER. BLOCKS WITHOUT MOUNTING ENDS WILL HAVE A "9" IN THE LAST DIGIT POSITION OF THE ASSEMBLY NUMBER.  
 FOR EXAMPLE:  
 A 6-POLE BLOCK WITH MOUNTING ENDS IS **269606000**  
 A 6-POLE BLOCK WITHOUT MOUNTING ENDS IS **269606009**  
 USE DIMENSION "A" AS THE OVERALL LENGTH OF BLOCKS WITH MOUNTING ENDS AND DIMENSION "C" AS THE OVERALL LENGTH OF BLOCKS WITHOUT MOUNTING ENDS.




2	052866700	SCREW, 6-32 x 1/4, BD HD, COMBO, STL, ZN PLD	SEE TABLE A		
1	SEE TABLE A	MOLDING, GBPX	1		
ITEM	PART NO.	DESCRIPTION	QTY.		
CADFILE NAME: 26960X00X RevE B.sldrw		<div><div><div>2400 South 43rd Street Milwaukee, WI 53219 Phone: (414) 649-4200 www.curtisind.com</div></div><div>TITLE GBPX/GBPCX TERMINAL BLOCK ASSY, 1-POLE TO 9-POLE CONFIGURATIONS</div></div>			
PREVIOUS P/N: NONE					
<div><div>UNLESS OTHERWISE SPECIFIED DIMENSIONS ARE IN INCHES. TOLERANCES ARE:      &lt; TOL. = 0° 30'     .XX TOL. = ±.01     .XXX TOL. = ±.005</div><div>PROPRIETARY &amp; CONFIDENTIAL TO CURTIS INDUSTRIES.  THE INFORMATION CONTAINED IN THIS DRAWING IS THE SOLE PROPERTY OF CURTIS INDUSTRIES. ANY REPRODUCTION IN PART OR AS A WHOLE WITHOUT THE WRITTEN PERMISSION OF CURTIS INDUSTRIES IS PROHIBITED.</div></div>					
FINISH	N/A	SCALE	DRAWN	CHECKED	DATE
		2:1	LAW		7/14/2008
MATERIAL		SIZE	SHT 1	DWG.	REV.
SEE B.O.M.		B	OF 1	NO.	E
		26960X00X			

TABLE A						
NO. OF POLES	ASSY P/N <sup>3</sup>	MOLDING P/N (ITEM 1) <sup>1</sup> <sup>E</sup>	QTY. OF SCREWS (ITEM 2) <sup>2</sup>	DIM "A" ±.030	DIM "B" ±.030	DIM "C" ±.030
1	26960100X	07960100X	1	1.250	0.875	0.562
2	26960200X	07960200X	2	1.687	1.312	1.000
3	26960300X	07960300X	3	2.125	1.750	1.437
4	26960400X	07960400X	4	2.562	2.187	1.875
5	26960500X	07960500X	5	3.000	2.625	2.312
6	26960600X	07960600X	6	3.437	3.062	2.750
7	26960700X	07960700X	7	3.875	3.500	3.187
8	26960800X	07960800X	8	4.312	3.937	3.625
9	26960900X	07960900X	9	4.750	4.375	4.062

