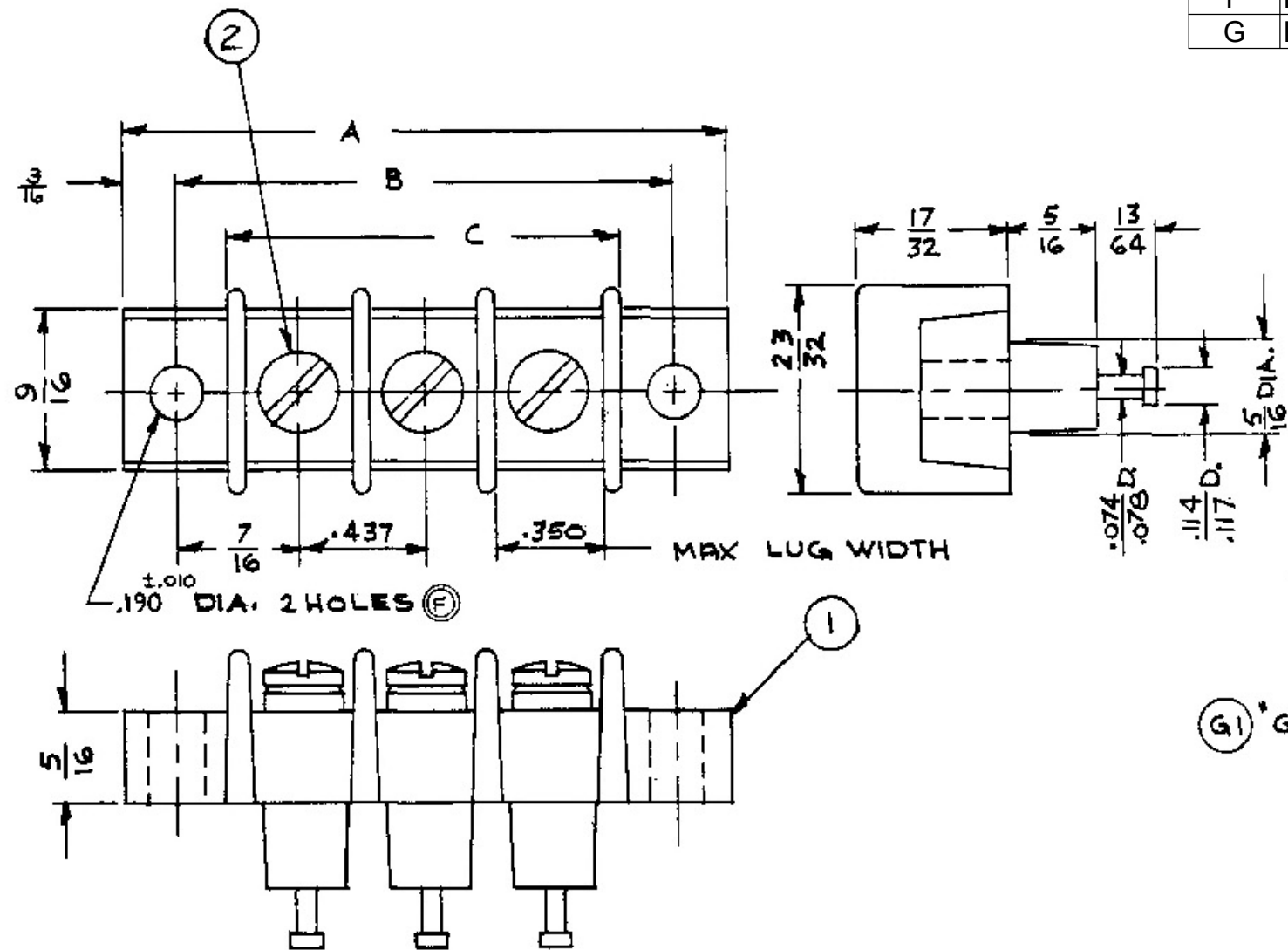


REVISION HISTORY				
REV	DESCRIPTION	DATE	CHG'D BY	APPV'D
E	REDRAWN DRAWING WAS 267804-G1	11-25-85	JAW	KJG
F	ECN 2645	6-20-86	SS	KJG
G	ECN 6000	2-2-04	LAW	KJG




NOTE:
1. TERMINAL BLOCK ASSEMBLY MUST CONFORM TO
QUALITY CONTROL SPECIFICATION 278A8.

"GFT" TERMINAL BLOCK WITH #6-32 TERMINAL SCREW
DIM 2660XX000

ALL STYLES AVAILABLE WITH WIRE CLAMP
DIM 2660XX008

ALL STYLES AVAILABLE WITHOUT MOUNTING
POSITIONS. SEE DIMENSION "C" ON SHEET 2
DIM 2660XX009

CADFILE NAME: 2660XX000 RevG B.slddrw		<div><div>2400 South 43rd Street Milwaukee, WI 53219 Phone: (414) 649-4200 www.curtisind.com</div></div>								
PREVIOUS P/N: NONE										
<div>UNLESS OTHERWISE SPECIFIED DIMENSIONS ARE IN INCHES. TOLERANCES ARE: < TOL. = 0° 30' .XX TOL. = ±.01 .XXX TOL. = ±.005</div>	<div>PROPRIETARY & CONFIDENTIAL TO CURTIS INDUSTRIES. THE INFORMATION CONTAINED IN THIS DRAWING IS THE SOLE PROPERTY OF CURTIS INDUSTRIES. ANY REPRODUCTION IN PART OR AS A WHOLE WITHOUT THE WRITTEN PERMISSION OF CURTIS INDUSTRIES IS PROHIBITED.</div>	TITLE "GFT" TERMINAL BLOCK ASSEMBLY								
FINISH	N/A	SCALE	N/A	DRAWN	MRJ	CHECKED	CJD	DATE	4/11/19	
MATERIAL	N/A	SIZE	B	SHT 1 OF 2	DWG. NO.	2660XX000			REV.	G



G I		DIMENSIONS			
ITEM 2 QTY	ITEM 1 DASH NO.	NO. OF POLES	A ±.030	B ±.030	C ±.030
1	-1	1	1.250	.875	.562
2	-2	2	1.687	1.312	1.000
3	-3	3	2.125	1.750	1.437
4	-4	4	2.562	2.187	1.875
5	-5	5	3.000	2.625	2.312
6	-6	6	3.437	3.062	2.750
7	-7	7	3.875	3.500	3.187
8	-8	8	4.312	3.937	3.625
9	-9	9	4.750	4.375	4.062
10	-10	10	5.187	4.812	4.500
11	-11	11	5.625	5.250	4.937
12	-12	12	6.062	5.687	5.375
13	-13	13	6.500	6.125	5.812
14	-14	14	6.937	6.562	6.250
15	-15	15	7.375	7.000	6.687
16	-16	16	7.812	7.437	7.125
17	-17	17	8.250	7.875	7.562
18	-18	18	8.687	8.312	8.000
19	-19	19	9.125	8.750	8.437
20	-20	20	9.562	9.187	8.875
21	-21	21	10.000	9.625	9.312
22	-22	22	10.437	10.062	9.750
23	-23	23	10.875	10.500	10.187
24	-24	24	11.312	10.937	10.625
25	-25	25	11.750	11.375	11.062
26	-26	26	12.187	11.812	11.500

ITEM	QTY	DESCRIPTION	P/N
1	1	TYPE GFT MOLDING (SEE TABLE FOR DASH NO.)	840--000
2	SEE TABLE	6-32 x 1/4 LG. BD. HD. M. S. STEEL NI PL.	52935120

CADFILE NAME: 2660XX000 RevG B.slddrw

PREVIOUS P/N: NONE

UNLESS OTHERWISE SPECIFIED DIMENSIONS ARE IN INCHES. TOLERANCES ARE:

< TOL. = 0° 30'

.XX TOL. = ±.01

.XXX TOL. = ±.005

PROPRIETARY & CONFIDENTIAL TO CURTIS INDUSTRIES.

THE INFORMATION CONTAINED IN THIS DRAWING IS THE SOLE PROPERTY OF CURTIS INDUSTRIES. ANY REPRODUCTION IN PART OR AS A WHOLE WITHOUT THE WRITTEN PERMISSION OF CURTIS INDUSTRIES IS PROHIBITED.

FINISH

N/A

MATERIAL

N/A

CURTIS

INDUSTRIES

A division of Powers Holdings, Inc.

2400 South 43rd Street

Milwaukee, WI 53219

Phone: (414) 649-4200

www.curtisind.com

TITLE

"GFT" TERMINAL BLOCK ASSEMBLY

SCALE

N/A

DRAWN

MRJ

CHECKED

CJD

DATE

4/11/19

SIZE

B

SHT 2 OF 2

DWG. NO.

2660XX000

REV.

G