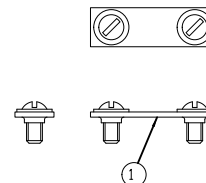
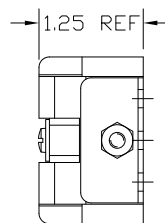
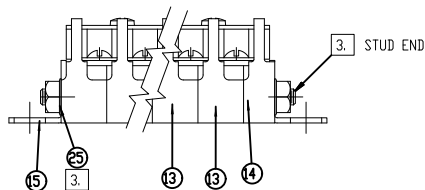
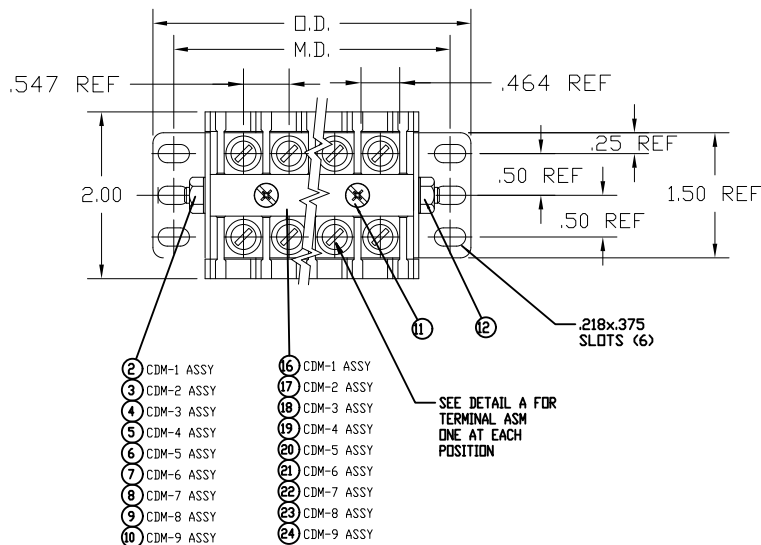


## NOTE:

1. M.D.: BLOCK TO MOUNT ON DIMENSION SHOWN.  
O.D.: PLUS OR MINUS 5/32 (MAX ON LONG BLOCKS)
2. SINCE MARKING STRIP IS USED "A/R" IT IS NOT ON THE B.O.M. LET  
INVENTORY CONTROL KNOW QTY OF MARKING STRIP USED.
3. STUD END NOT TO EXCEED 1/16". INSTALL ALUMINUM WASHER (ITEM 25) TO REDUCE IT.  
CUT EXPOSED STUD END IF IT STILL IS LONGER THAN 1/16".



BT & CDM TERMINAL ASSEMBLY  
PN 250910000  
DETAIL A  
SCALE: FULL

REVISION HISTORY				
REV	DESCRIPTION	DATE	CHGD BY	APP'D
C	ECN 6917-3, REDRAWN AND UPDATED KEPNUT QTY.	09/20/11	AJM	CJD
D	ECN 7390, CHANGED ITEM 6 P/N & DESCRIPTION	03/04/15	TJP	CJD
E	ECN 7750, UPDATE ITEM 11 QUANTITY	11/27/18	CJB	CJD

2	TYPE	ASSEMBLY	M.D.	O.D.
NO.	NO.	PART NO.	± .030	± .030
CDM-01	265001000	1.672	2.346	
CDM-02	265002000	2.220	2.896	
CDM-03	265003000	2.767	3.441	
CDM-04	265004000	3.314	3.988	
CDM-05	265005000	3.861	4.535	
CDM-06	265006000	4.409	5.083	
CDM-07	265007000	4.956	5.630	
CDM-08	265008000	5.503	6.177	
CDM-09	265009000	6.050	6.724	

2	E	D	ITEM	PART NO.	DESCRIPTION OR NAME	CDM	QUANTITY PER BT ASSY
			25	048090000	WASHER, ALUMINUM	AR AR AR AR AR AR AR AR	
			24	088297009	CDM MARKING STRIP, 5.171"	- - - - -	1
			23	088297008	CDM MARKING STRIP, 4.624"	- - - - -	1
			22	088297007	CDM MARKING STRIP, 4.077"	- - - - -	1
			21	088297006	CDM MARKING STRIP, 3.530"	- - - - -	1
			20	088297005	CDM MARKING STRIP, 2.983"	- - - - -	1
			19	088297004	CDM MARKING STRIP, 2.436"	- - - - -	1
			18	088297003	CDM MARKING STRIP, 1.889"	- - - - -	1
			17	088297002	CDM MARKING STRIP, 1.342"	- - - - -	1
			16	088297001	CDM MARKING STRIP, 0.797"	- - - - -	1
			15	080040000	END BRACKET, SB	2 2 2 2 2 2 2 2	2
			14	072925000	CDM END PARTITION	1 1 1 1 1 1 1 1	1
			13	072875000	CDM SPACER MOLDING	1 2 3 4 5 6 7 8 9	1
			12	062300700	NUT, HEX, KEPS, 10-32, STL, ZY	1 1 1 1 1 1 1 1	2
			11	052866700	SCREW, 6-32x1/4, BINDER HD, COMBO, STL, ZN PL	1 1 2 2 2 2 2 2	2
			10	081009000	ASSEMBLY STUD, CDM-9, ALUMINUM	- - - - -	1
			9	081008000	ASSEMBLY STUD, CDM-8, ALUMINUM	- - - - -	1
			8	052715700	CDM ASSEMBLY STUD (10-32x4-1/2, PH, STL, ZND	- - - - -	1
			7	052715700	CDM ASSEMBLY STUD (10-32x4-1/2, PH, STL, ZND	- - - - -	1
			6	052660700	SCREW, 10-32 X 4, RD HD, STL, ZN PLD	- - - - -	1
			5	052385700	CDM ASSEMBLY STUD (10-32x3-0, PH, STL, ZND	- - - - -	1
			4	052220700	CDM ASSEMBLY STUD (10-32x2-1/4, PH, STL, ZND	- - - - -	1
			3	052110700	CDM ASSEMBLY STUD (10-32x1-3/4, PH, STL, ZND	- - - - -	1
			2	052055700	CDM ASSEMBLY STUD (10-32x1-1/8, PH, STL, ZND	- - - - -	1
			1	250910000	BT & CDM TERMINAL BAR ASSEMBLY	1 2 3 4 5 6 7 8 9	1
						-1 -2 -3 -4 -5 -6 -7 -8 -9	

CAD FILENAME: 26500X000 RevE B.dwg		PREVIOUS P/N: NONE	
UNLESS OTHERWISE SPECIFIED DIMENSIONS ARE IN INCHES (mm). TOLERANCES ARE:  ∠ TOL. = ±0°30' .XX TOL. = ±.01 .XXX TOL. = ±.005		PROPRIETARY & CONFIDENTIAL TO CURTIS INDUSTRIES.  THE INFORMATION CONTAINED IN THIS DRAWING IS THE SOLE PROPERTY OF CURTIS INDUSTRIES. ANY REPRODUCTION IN PART OR AS A WHOLE WITHOUT THE WRITTEN PERMISSION OF CURTIS INDUSTRIES IS PROHIBITED.	
FINISH	N/A	SCALE	N/A
MATERIAL	SEE B.O.M.	SIZE	B
		DATE	09/14/11
		REV.	E



2400 South 43<sup>rd</sup> Street  
Milwaukee, WI 53219  
Phone: (414) 649-4200  
www.curtisind.com

TITLE CDM TERMINAL BLOCK ASSEMBLY, POS. 1-9

SCALE N/A DRAWN AJM CHECKED CJD DATE 09/14/11  
SHT. 1 OF 1 DWG NO. 26500X000 REV. E