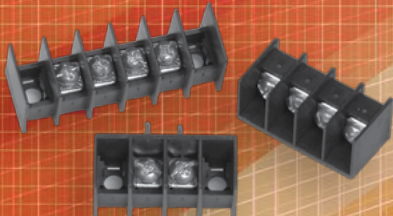
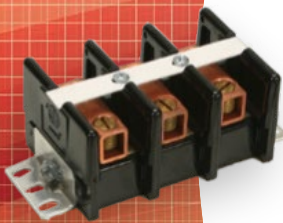




Selection Guide

TERMINAL BLOCKS



Terminal Blocks

Terminal blocks are typically used in commercial and industrial equipment, subassemblies, and electrical applications requiring input or output connections. They connect electrical wires in the same circuit in a secure manner without having to cut or splice.

CUSTOM AND STANDARD

Curtis Industries offers both industry-standard and custom-designed terminal blocks for nearly any application across numerous industries. Our terminal blocks are designed to support a wide range of wire-to-board and wire-to-wire configurations.

Curtis engineers can design any style of terminal block to your exact specifications. Design and manufacturing capabilities include insert-molded as well as pressed-in solutions for vertical and horizontal molding processes.

QUALITY ASSURED

All Curtis barrier-style, PC board (Euro-style) terminal blocks and custom solutions meet or exceed UL, CSA and IEC/EN as well as

customer-specified safety, environmental and regulatory requirements. We use only the highest quality materials for our products, including agency-approved, engineering-grade thermoplastic or thermoset resins well-suited for your design and the end application.

Engineering design methods and lean manufacturing processes are optimized through our ISO 9001:2015 Quality Management System (QMS) and ongoing implementation of Advanced Product Quality Planning, Design for Manufacturability, Statistical Process Control and related QMS tools. Continuous improvement is the goal in every aspect of the design and manufacturing processes.

Each electrical component manufactured by Curtis is meticulously tested for various compliance requirements at every step of the procurement and production process. This dedication to superior quality guarantees that your components are implemented seamlessly and function perfectly.

Barrier (North American Style) Terminal Blocks

Single-Row, Pressed-in Inserts



3250 Series

- 0.325" (8.25mm) spacing
- 300V / 15A rating
- Open or Tri-Barrier design
- Up to 28 poles in length
- 105°C UL/CSA 94V-0 rating
- Wire sizes: 22 to 14 AWG
- Insulation: Polypropylene (PP)



37000 Series

- 3/8" (0.375"/9.52mm) spacing
- 300V / 20A rating
- Tri-Barrier design
- Up to 28 poles in length
- 105°C UL/CSA 94V-0 rating
- Wire sizes: 22 to 12 AWG
- Insulation: Polypropylene (PP)



38000 Series

- 3/8" (0.375"/9.52mm) spacing
- 300V / 20A rating
- Open-back design
- Up to 28 poles in length
- 105°C UL/CSA 94V-0 rating
- Wire sizes: 22 to 12 AWG
- Insulation: Polypropylene (PP)



43000 Series

- 7/16" (.4375"/11.11mm) spacing
- 600V / up to 30A rating
- Open-back design
- Up to 28 poles in length
- 105°C UL/CSA 94V-0 rating
- Wire sizes: 22 to 12 AWG
- Insulation: Polypropylene (PP)

Single-Row, Insert Molded



CB Series

- 3/8" (.375"/9.52mm) spacing
- 300V / 20A rating
- Open-back, uninsulated feed-thru design
- Up to 26 poles in length
- 140°C UL/CSA 94V-0 rating
- Wire sizes: 22 to 12 AWG
- Insulation: PBT



CFT Series

- 3/8" (0.375"/9.52mm) spacing
- 300V / 20A rating
- Open-back, insulated feed-thru design
- Up to 26 poles in length
- 140°C UL/CSA 94V-0 rating
- Wire sizes: 22 to 12 AWG
- Insulation: PBT



GB Series

- 7/16" (.4375"/11.11mm) spacing
- 300V / 20A rating
- Open-back, uninsulated feed-thru design
- Up to 26 poles in length
- 140°C UL/CSA 94V-0 rating
- Wire sizes: 22 to 12 AWG
- Insulation: Phenolic or PPE



GFT Series

- 7/16" (.4375"/11.11mm) spacing
- 300V / 20A rating
- Open-back, insulated feed-thru design
- Up to 26 poles in length
- 140°C UL/CSA 94V-0 rating
- Wire sizes: 22 to 12 AWG
- Insulation: Phenolic or PPE

Double Row Blocks



1500 Series

- 3/8" (.375"/9.52mm) spacing
- 300V / up to 20A rating
- Up to 22 poles in length
- Feed-thru option available
- 110°C UL/CSA 94V-0 rating
- Wire sizes: 22 to 12 AWG
- Insulation: PPE



2000 Series

- 7/16" (.4375"/11.11mm) spacing
- 300V / up to 30A rating
- Up to 26 poles in length
- Feed-thru option available
- 110°C UL/CSA 94V-0 rating
- Wire sizes: 22 to 10 AWG
- Insulation: PPE



56000 Series

- 9/16" (.563"/14.29mm) spacing
- 600V / up to 50A rating
- Up to 22 poles in length
- Feed-thru option available
- 150°C UL/CSA 94V-0 rating
- Wire sizes: 22 to 8 AWG
- Insulation: Phenolic

Barrier (North American Style) Terminal Blocks

High-Current Terminal Blocks



71000 Series

- .629" / 15.98mm spacing
- 600V / 86A rating
- Din-rail track mountable
- 2, 3 and 6-pole lengths
- 140°C UL/CSA 94V-0 rating
- Wire sizes: 22 to 2 AWG
- Insulation: PBT



H Series

- .652" / 16.56mm spacing
- 600V / 75A rating
- Surface mount / Box terminals
- Up to 30 poles in length
- 130°C UL/CSA 94V-0 rating
- Wire sizes: 22 to 2 AWG
- Insulation: PBT



S Series

- 2.42" / 61.47mm spacing
- 600V / 225A rating
- Surface mount / slotted 3/8" hex screw terminals
- Up to 4 poles in length
- 150°C UL/CSA 94V-1 rating
- Wire sizes: 4/0 AWG
- Insulation: Phenolic



CDM Series

- 35/64" (.547"/13.86mm) spacing
- 600V / 30A rating
- Surface mount
- Up to 50 poles in length
- 130°C UL/CSA 94V-0 rating
- Wire sizes: 22 to 10 AWG
- Insulation: PBT



L Series

- 1.16" / 29.46mm spacing
- 600V / 100A rating
- Surface mount / screw terminals
- Up to 12 poles in length
- 150°C UL/CSA 94V-1 rating
- Wire sizes: 1 AWG
- Insulation: Phenolic



SW & DSW Series

- .375" / 9.52mm spacing
- 600V / 50A rating
- Track mount / screw terminals
- Up to 192 poles in length
- 125°C UL/CSA 94V-2 rating
- Wire sizes: 22 to 8 AWG
- Insulation: Polyamide 66



BT Series

- .652" / (16.56mm) spacing
- 600V / 30A rating
- Surface mount / screw terminals
- Up to 30 poles in length
- 130°C UL/CSA 94V-0 rating
- Wire sizes: 22 to 2 AWG
- Insulation: PBT



O Series

- 1.86" / 47.24mm spacing
- 600V / 125A rating
- Surface mount / slotted 5/16" hex screw terminals
- Up to 4 poles in length
- 150°C UL/CSA 94V-1 rating
- Wire sizes: 1/0 AWG
- Insulation: Phenolic



T & U Series

- 1.16" / 29.46mm spacing
- 600V / 125 & 250 A ratings
- Surface mount / Box connectors
- Up to 6 poles in length
- 150°C UL/CSA 94V-1 rating
- Wire sizes: 6 to 1/0 AWG
- Insulation: Phenolic

Precision Molding Capabilities



Curtis designs and manufactures specialized molded electrical components to meet your specific requirements.

Quality is assured by optimizing engineering design methods and the implementation of Advanced Product Quality Planning (APQP) techniques.

PROCESSES

- Vertical and Horizontal Molding
- Design and Prototyping
- Engineering-Grade Thermoplastic Resins
- Injection and Transfer Molded and Thermoset Resins
- Insert Molding

RESINS (FILLED AND UNFILLED)

- Nylons
- PBT (polybutylene terephthalate)
- PC (polycarbonates)
- PC/ABS (polycarbonate/acrylonitrile-butadiene-styrene)
- PEI (polyetherimide)
- PET (polyethylene terephthalate)
- PP (polypropylenes)
- Phenolic / BMC (thermoset resins)

PCB Mounted (European Style) Connectors

Low-Profile Connectors and Headers



CBF SERIES – Female Connector for CTM Series

- Spring clamp wire retention
- Housing Height: 11.65 mm (.459 in.)
- Voltage Rating: **300 Vac** / 3.5 to 7.62 mm (UL/cUL)
- Current Rating: **11 A** (UL/cUL) / 8 A (IEC/VDE/IMQ)
- Max. Wire Size: **14 AWG** (UL) / 1.5 mm² (IEC EN)
- Pitches / Center-to-Center Spacings:

Metric:	mm:	3.5	7.5
	In.:	(.138)	(.295)
Imperial:	In.:	.150	.300
	mm:	(3.81)	(7.62)
- Mounting Options: Side Stackable, w/ Locking Screw Flanges, Single molded lengths of 2 up to 25 poles



CSF & CSM SERIES, Connector and Header

- Screw terminal wire retention
- Housing Height: 7.25 mm (.285 in.)
- Voltage Rating: **300 Vac** / 3.5 to 7.62 mm
600 Vac / 10.0 & 10.16 mm
- Current Rating: **12 A** (UL/cUL/VDE) / 11 A (IEC)
- Max. Wire Size: **14 AWG** (UL/cUL) / 2.5 mm² (IEC)
- Pitches / Center-to-Center Spacings:

Metric:	mm:	3.5	5.0	7.0	10.0
	In.:	(.138)	(.197)	(.275)	(.394)
Imperial:	In.:	.150	.200	.300	.400
	mm:	(3.81)	(5.08)	(7.62)	(10.16)
- Mounting Options: Modular, Polarized, w/ Locking Screw Flanges, Single molded lengths from 2 up to 25 poles



CKF SERIES – Female Connector for CTM Series

- Screw terminal wire retention
- Housing Height: 10.35 mm (.406 in.)
- Voltage Rating: **300 Vac** / 3.5 to 7.62 mm (UL/cUL)
- Current Rating: **10 A** (UL/cUL) / 11 A (IEC/IMQ)
- Max. Wire Size: **14 AWG** (UL) / 1.5 mm² (IEC/IMQ)
- Pitches / Center-to-Center Spacings:

Metric:	mm:	3.5	7.5
	In.:	(.138)	(.295)
Imperial:	In.:	.150	.300
	mm:	(3.81)	(7.62)
- Mounting Options: Side Stackable, Modular, w/ Locking Screw Flanges, Stackable 2 & 3 pole lengths



CHF & CLMH SERIES – Connector and Header

- Spring clamp wire retention
- Housing Height: 12.5 mm (.492 in.)
- Voltage Rating: **150 Vac** / 3.5, 7.5 mm (UL/IEC)
- Current Rating: **2 A** (UL/cUL) / 4 A (IEC)
- Max. Wire Size: **16 AWG** (UL) / 1.5 mm² (CE)
- Pitches / Center-to-Center Spacings:

Metric:	mm:	3.5	7.5
	In.:	(.138)	(.295)
- Mounting Options: Modular (CHF), Side Stackable (CLMH), Single molded lengths of 2 to 12 poles
- Solderable at temperatures up to 270°C / 518°F



CTF SERIES – Female Connector for CTM Series

- Screw terminal wire retention
- Housing Height: 11.1 mm (.437 in.)
- Voltage Rating: **300 Vac** / 3.5 to 10.16 mm
- Current Rating: **11 A** (UL/cUL/VDE) / 13.5 A (IEC/IMQ)
- Max. Wire Size: **14 AWG** (UL/cUL) / 1.5 mm² (IEC EN)
- Pitches / Center-to-Center Spacings:

Metric:	mm:	3.5	5.0	7.5	10.0
	In.:	(.138)	(.197)	(.295)	(.394)
Imperial:	In.:	.150	.200	.300	.400
	mm:	(3.81)	(5.08)	(7.62)	(10.16)
- Mounting Options: Side Stackable, Modular, w/ Locking Screw Flanges, Single molded lengths from 2 up to 25 poles



CGM SERIES – Male Connector for C_F Series*

- Screw terminal wire retention
- Housing Height: 19.3 mm (.760 in.)
- Voltage Rating: **300 Vac** / 5.0, 5.08, 7.5 & 7.62 mm
600 Vac / 10.0 & 10.16 mm
- Current Rating: **15 A** (UL/cUL) / 16 A (IEC/VDE)
- Max. Wire Size: **12 AWG** (UL/cUL) / 2.5 mm² (IEC EN)
- Pitches / Center-to-Center Spacings:

Metric:	mm:	5.0	7.5	10.0
	In.:	(.197)	(.295)	(.394)
Imperial:	In.:	.200	.300	.400
	mm:	(5.08)	(7.62)	(10.16)
- Mounting Options: Modular, Side Stackable, Polarized, Single molded lengths from 2 to 25 poles



CTM SERIES – PCB Male Connector

- PCM mounted/soldered male connector
- Housing Height: 7.25 mm (.285 in.)
- Voltage Rating: **300 Vac** / 3.5 to 7.62 mm
600 Vac / 10.0 & 10.16 mm
- Current Rating: **11 A** (UL/cUL/VDE/IEC/IMQ)
- Max. Wire Size: **14 AWG** (UL/cUL) / 1.5 mm² (IEC/IMQ)
- Pitches / Center-to-Center Spacings:

Metric:	mm:	3.5	5.0	7.0	10.0
	In.:	(.138)	(.197)	(.275)	(.394)
Imperial:	In.:	.150	.200	.300	.400
	mm:	(3.81)	(5.08)	(7.62)	(10.16)
- Mounting Options: Modular, Polarized, w/ Locking Screw Flanges, Single molded lengths from 2 up to 25 poles



CGF SERIES – Female Connector for C_M Series*

- PCB mounted/soldered connector
- Housing Height: 18.9 mm (.744 in.)
- Voltage Rating: **300 Vac** / 5.0, 5.08, 7.5 & 7.62 mm
600 Vac / 10.0 & 10.16 mm
- Current Rating: **15 A** (UL/cUL) / 16 A (IEC/VDE)
- Max. Wire Size: **12 AWG** (UL/cUL) / 2.5 mm² (IEC/VDE)
- Pitches / Center-to-Center Spacings:

Metric:	mm:	5.0	7.5	10.0
	In.:	(.197)	(.295)	(.394)
Imperial:	In.:	.200	.300	.400
	mm:	(5.08)	(7.62)	(10.16)
- Mounting Options: Modular, Single-molding sizes of 2 and 3 poles

*Please contact our Sales Department at (800) 657-0853 with questions when ordering from the C_F or C_M Series of Connectors.

PCB Mounted (European Style) Connectors (con't.)

Medium Profile Connectors and Headers



CIF SERIES – Female Connector for C_M Series*

- Screw terminal wire retention
- Housing Height: 18.4 mm (.724 in.)
- Voltage Rating: 300 Vac / 5.0, 5.08, 7.5 & 7.62 mm
600 Vac / 10.0 & 10.16 mm
- Current Rating: 15 A (UL/cUL) / 16 A (IEC/VDE)
- Max. Wire Size: 2.5 mm² / 12 AWG
- Pitches

Metric:	mm:	5.0	7.5	10.0
	In.:	(.197)	(.295)	(.394)
Imperial:	In.:	.200	.300	.400
	mm:	(5.08)	(7.62)	(10.16)
- Mounting Options: Modular, Side Stackable, w/ Locking Screw Flanges, Single-molding sizes from 2 to 25 poles



CIM SERIES – Male Connector for C_F Series*

- PCB mounted/soldered male connector
- Housing Height: 12 mm (.472 in.)
- Voltage Rating: 300 Vac / 5.0, 5.08, 7.5 & 7.62 mm
600 Vac / 10.0 & 10.16 mm
- Current Rating: 15 A (UL/cUL) / 16 A (IEC/VDE)
- Max. Wire Size: 2.5 mm² / 12 AWG
- Pitches

Metric:	mm:	5.0	7.5	10.0
	In.:	(.197)	(.295)	(.394)
Imperial:	In.:	.200	.300	.400
	mm:	(5.08)	(7.62)	(10.16)
- Mounting Options: Modular, Side Stackable, Polarized, w/ Locking Screw Flanges, Ejector ears, Single-molding sizes from 2 up to 25 poles



CCF SERIES – Female Connector for C_M Series*

- Spring clamp wire retention
- Housing Height: 25.4 mm (1.0 in.)
- Voltage Rating: 300 Vac / 5.0 & 5.08 mm
600 Vac / 10.0 & 10.16 mm
- Current Rating: 12 A (UL/cUL/IEC)
- Max. Wire Size: 2.5 mm² / 12 AWG
- Pitches

Metric:	mm:	5.0	10.0
	In.:	(.197)	(.394)
Imperial:	In.:	.200	.400
	mm:	(5.08)	(10.16)
- Mounting Options: Side Stackable, w/ Locking Screw Flanges, Single-molding sizes from 2 up to 18 poles



CPM SERIES – Male Double-Row Connector for C_F Series*

- PCM mounted male dual-height connector
- Housing Height: 22.08 mm (.869 in.)
- Voltage Rating: 300 Vac / 5.0 & 5.08 mm
600 Vac / 10.0 & 10.16 mm
- Current Rating: 15 A (UL/cUL) / 16 A (IEC/VDE/IMQ)
- Max. Wire Size: --- (PCB mounted)
- Pitches

Metric:	mm:	5.0	10.0
	In.:	(.197)	(.394)
Imperial:	In.:	.200	.400
	mm:	(5.08)	(10.16)
- Mounting Options: Modular, Polarized, Single-molding sizes from 2 up to 25 poles



CUF SERIES – Female Connector for C_M Series*

- Screw terminal wire retention
- Housing Height: 18.4 mm (.724 in.)
- Voltage Rating: 300 Vac / 5.0 mm
600 Vac / 10.0 mm
- Current Rating: 10 A (UL/cUL/IEC/VDE)
- Max. Wire Size: 2.5 mm² / 12 AWG
- Pitches

Metric:	mm:	5.0	10.0
	In.:	(.197)	(.394)
- Mounting Options: Side Stackable, Polarized, Single-molding sizes from 2 to 16 poles



CRM SERIES – Male Double-Row Connector for C_F Series*

- PCM mounted male single-height connector
- Housing Height: 28.5 mm (.122 in.)
- Voltage Rating: 300 Vac / 5.0 & 5.08 mm
600 Vac / 10.0 & 10.16 mm
- Current Rating: 15 A (UL/cUL) / 16 A (IEC/VDE/IMQ)
- Max. Wire Size: --- (PCB mounted)
- Pitches

Metric:	mm:	5.0	10.0
	In.:	(.197)	(.394)
Imperial:	In.:	.200	.400
	mm:	(5.08)	(10.16)
- Mounting Options: Modular, Polarized, Single-molding sizes from 2 to 25 poles



CVF SERIES – Female Asymmetric Connector for C_M Series*

- Screw terminal wire retention
- Housing Height: 12.5 mm (.492 in.)
- Voltage Rating: 300 Vac / 5.0, 5.08, 7.5 & 7.62 mm
600 Vac / 10.0 & 10.16 mm
- Current Rating: 15 A (UL/cUL) / 16 A (IEC/VDE/IMQ)
- Max. Wire Size: 2.5 mm² / 12 AWG
- Pitches

Metric:	mm:	5.0	7.5	10.0
	In.:	(.197)	(.295)	(.394)
Imperial:	In.:	.200	.300	.400
	mm:	(5.08)	(7.62)	(10.16)
- Mounting Options: Left/Right Side Stackable, Left/Right Modular, Left/Right Locking Screw Flanges, Single-molded sizes from 2 up to 25 poles

* Please contact our Sales Department at (800) 657-0853 with questions when ordering from the C_F or C_M Series of Connectors.

PCB Mounted (European Style) Terminal Blocks



MSD SERIES – PCB Terminal Block

- Screw terminal wire retention
- Housing Height: 10.0 mm (.394 in.)
- Voltage Rating: 150 Vac / 2.54 mm
300 Vac / 5.08 mm
- Current Rating: 10 A (UL/cUL) / 12 A (IEC/IMQ)
- Max. Wire Size: 1.0 mm² / 16 AWG
- Mtg. Versions: Straight
- Pitches

Imperial:	In.:	.100	.200
	mm:	(2.54)	(5.08)
- Mounting Options: Side Stackable, Single-molding sizes from 2 to 12 poles



MTB SERIES – Low-Profile PCB Terminal Block

- Screw terminal wire retention, 270°C/518°F temp. available
- Housing Height: 8.5 mm (.335 in.)
- Voltage Rating: 300 Vac / 3.5, 3.81, 7.0 & 7.62 mm
- Current Rating: 12 A (UL/cUL) / 17.5 A (IEC/IMQ)
- Max. Wire Size: 1.5 mm² / 16 AWG
- Mtg. Versions: Straight, 55°
- Pitches

Metric:	mm:	3.5	7.0
	In.:	(.138)	(.275)
Imperial:	In.:	.150	.300
	mm:	(3.81)	(7.62)
- Mounting Options: Side Stackable, Modular, Single-molding sizes from 2 to 25 poles
- Solderable at temperatures up to 270°C / 518°F



MTS SERIES – PCB Terminal Block

- Screw terminal wire retention
- Housing Height: 12.6 mm (.496 in.)
- Voltage Rating: 300 Vac / 3.5, 3.81, 7.0 & 7.62 mm
- Current Rating: 12 A (UL/cUL) / 17.5 A (IEC/IMQ)
- Max. Wire Size: 1.5 mm² / 14 AWG
- Mtg. Versions: Straight, 90°
- Pitches

Metric:	mm:	3.5	7.0
	In.:	(.138)	(.275)
Imperial:	In.:	.150	.300
	mm:	(3.81)	(7.62)
- Mounting Options: Modular, Single-molding sizes from 2 to 25 poles



MSB SERIES – Low-Profile PCB Terminal Block

- Screw terminal wire retention, 270°C/518°F temp. available
- Housing Height: 10.0 mm (.394 in.)
- Voltage Rating: 300 Vac / 5.0 & 5.08 mm
600 Vac / 10.0 & 10.16 mm
- Current Rating: 17.5 A (UL/cUL/IEC) / 13.5 A (VDE)
- Max. Wire Size: 1.5 mm² / 14 AWG
- Mtg. Versions: Straight, 90°, 55°
- Pitches

Metric:	mm:	5.0	10.0
	In.:	(.197)	(.394)
Imperial:	In.:	.200	.400
	mm:	(5.08)	(10.16)
- Mounting Options: Side-Stackable, Modular, Single-molding sizes from 2 to 25 poles



MSP SERIES – PCB Terminal Block

- Screw terminal wire retention
- Housing Height: 21.5 mm (.846 in.)
- Voltage Rating: 300 Vac / 6.35 & 7.62 mm
600 Vac / 9.52 & 12.7 mm
- Current Rating: 30 A (UL) / 32 A (CSA/VDE) / 41 A (IEC)
- Max. Wire Size: 6.0 mm² / 10 AWG
- Mtg. Versions: Straight, 90°, 35°
- Pitches

Imperial:	In.:	.250	.300	.375	.500
	mm:	(6.35)	(7.62)	(9.52)	(12.7)
- Mounting Options: Modular, Single-molding sizes from 2 to 5 poles



MSQ SERIES – PCB Terminal Block

- Screw terminal wire retention
- Housing Height: 19.0 mm (.748 in.)
- Voltage Rating: 300 Vac / 5.0 & 5.08 mm
600 Vac / 7.5 to 10.16 mm
- Current Rating: 24 A (UL/cUL/VDE) / 32 A (IEC/IMQ)
- Max. Wire Size: 4.0 mm² / 12 AWG
- Mtg. Versions: Straight, 90°
- Pitches

Metric:	mm:	5.0	7.5	10.0
	In.:	(.197)	(.295)	(.394)
Imperial:	In.:	.200	.300	.400
	mm:	(5.08)	(7.62)	(10.16)
- Mounting Options: Modular, Single-molding sizes from 2 to 25 poles



MPS SERIES – PCB Terminal Block

- Screw terminal wire retention, 270°C/518°F temp. available
- Housing Height: 29.3 mm (1.154 in.)
- Voltage Rating: 300 Vac / Version "D"
600 Vac / Versions "S" & "Z"
- Current Rating: 60 A (UL/cUL) / 110 A (IEC/VDE/IMQ)
- Max. Wire Size: 16.0 mm² / 6 AWG
- Mtg. Versions: Straight
- Pitches

Imperial:	In.:	.400
	mm:	(10.16)
- Mounting Options: Side-Stackable, Modular, Mounting Flanges, Single-molding sizes from 2 to 12 poles
- Solderable at temperatures up to 270°C / 518°F



MPP SERIES – PCB Terminal Block

- Screw terminal wire retention, 270°C/518°F temp. available
- Housing Height: 39.0 mm (1.535 in.)
- Voltage Rating: 600 Vac
- Current Rating: 135 A (UL/cUL) / 125 A (VDE)
- Max. Wire Size: 35.0 mm² / 1 AWG
- Mtg. Versions: Straight
- Pitches

Metric:	mm:	15.0
	In.:	(.591)
- Mounting Options: Side-Stackable, Modular, Mounting Flanges, Single-molding sizes from 2 to 12 poles
- Solderable at temperatures up to 270°C / 518°F



MSG SERIES – PCB Terminal Block

- Screw terminal wire retention, 270°C/518°F temp. available
- Housing Height: 13.5 mm (.531 in.)
- Voltage Rating: 300 Vac / 5.0 to 7.62 mm
600 Vac / 10.0 & 10.16 mm
- Current Rating: 17.5 A (UL/cUL/VDE) / 32 A (IEC/IMQ)
- Max. Wire Size: 2.5 mm² / 14 AWG
- Mtg. Versions: Straight, 90°, 270°
- Pitches

Metric:	mm:	5.0	7.5	10.0
	In.:	(.197)	(.295)	(.394)
Imperial:	In.:	.200	.300	.400
	mm:	(5.08)	(7.62)	(10.16)
- Mounting Options: Side-Stackable, Modular, Single-molding sizes from 2 to 25 poles
- Solderable at temperatures up to 270°C / 518°F

PCB Mounted (European Style) Terminal Blocks (con't.)



MSM SERIES

- Screw terminal wire retention
- Housing Height: 15.2 mm (.598 in.)
- Voltage Rating: 300 Vac / 5.0 to 7.62 mm
600 Vac / 10.0 & 10.16 mm
- Current Rating: 17.5 A (UL/cUL) / 24 A (IEC/VDE/IMQ)
- Max. Wire Size: 2.5 mm² / 12 AWG
- Mtg. Versions: Straight, 35°, 90°, 270°
- Pitches

Metric:	mm:	5.0	7.5	10.0
	In.:	(.197)	(.295)	(.394)
Imperial	In.:	.200	.300	.400
	mm:	(5.08)	(7.62)	(10.16)
- Mounting Options: Modular, Single-molding sizes from 2 to 25 poles



MSS SERIES

- Screw terminal wire retention
- Housing Height: 15.2 mm (.598 in.)
- Voltage Rating: 300 Vac / 5.0 to 7.62 mm
600 Vac / 10.0 & 10.16 mm
- Current Rating: 17.5 A (UL/cUL) / 24 A (IEC/VDE/IMQ)
- Max. Wire Size: 2.5 mm² / 12 AWG
- Mtg. Versions: Straight, 90°, 270°
- Pitches

Metric:	mm:	5.0	7.5	10.0
	In.:	(.197)	(.295)	(.394)
Imperial	In.:	.200	.300	.400
	mm:	(5.08)	(7.62)	(10.16)
- Mounting Options: Modular, Single-molding sizes from 2 to 25 poles



MMT SERIES

- Spring clamp wire retention
- Housing Height: 14.85 mm (.585 in.)
- Voltage Rating: 300 Vac / 3.5, 3.81, 7.0 & 7.62 mm
- Current Rating: 9 A (UL/cUL) / 10 A (IEC/VDE/IMQ)
- Max. Wire Size: 1.5 mm² / 16 AWG
- Pitches

Metric:	mm:	3.5	7.0
	In.:	(.138)	(.276)
Imperial	In.:	.150	.300
	mm:	(3.81)	(7.62)
- Mounting Options: Side Stackable, Single-molding sizes from 2 up to 16 poles
- Solderable at temperatures up to 270°C / 518°F



MCM SERIES

- Spring clamp wire retention
- Housing Height: 14.45 mm (.569 in.)
- Voltage Rating: 300 Vac / 5.0, 5.08, 7.5 & 7.62 mm
600 Vac / 10.0 & 10.16 mm
- Current Rating: 16 A (UL/cUL/VDE)
- Max. Wire Size: 2.5 mm² / 12 AWG
- Pitches

Metric:	mm:	5.0	7.5	10.0
	In.:	(.197)	(.295)	(.394)
Imperial	In.:	.200	.300	.400
	mm:	(5.08)	(7.62)	(10.16)
- Mounting Options: Side Stackable, Single-molding size of 1 pole
- Solderable at temperatures up to 270°C / 518°F



MCQ SERIES

- Spring clamp wire retention
- Housing Height: 17.48 mm (.688 in.)
- Voltage Rating: 300 Vac / 5.0, 5.08, 7.5 & 7.62 mm
600 Vac / 10.0 & 10.16 mm
- Current Rating: 12 A (UL/cUL/IEC)
- Max. Wire Size: 2.5 mm² / 12 AWG
- Pitches

Metric:	mm:	5.0	10.0
	In.:	(.197)	(.394)
Imperial	In.:	.200	.400
	mm:	(5.08)	(10.16)
- Mounting Options: Side Stackable, Single-molding sizes from 2 to 18 poles

PCB Mounted (European Style) Multi-Level Terminal Blocks

Low-Profile Connectors and Headers



PSB SERIES

- Screw terminal wire retention
- Housing Heights: 10, 19, 28 mm (.394, .748, 1.102 in.)
- Voltage Rating: 300 Vac / 5.0 and 5.08 mm
600 Vac / 10.0 and 10.16 mm
- Current Rating: 13.5 A (UL/cUL/VDE) / 17.5 A (IEC/IMQ)
- Max. Wire Size: 1.5 mm² / 16 AWG
- Mtg. Versions: 2 and 3 levels
- Pitches

Metric:	mm:	5.0	10.0
	In.:	(.197)	(.394)
Imperial	In.:	.200	.400
	mm:	(5.08)	(10.16)
- Mounting Options: Modular, Single-molding sizes from 2 to 3 poles



PSM SERIES

- Screw terminal wire retention
- Housing Heights: 14.8, 25.2, 35.6 mm (.58, .99, 1.40 in.)
- Voltage Rating: 300 Vac / 5.0 and 5.08 mm
600 Vac / 10.0 and 10.16 mm
- Current Rating: 17.5 A (UL/cUL) / 24 A (IEC/VDE/IMQ)
- Max. Wire Size: 2.5 mm² / 12 AWG
- Mtg. Versions: 2 and 3 levels
- Pitches

Metric:	mm:	5.0	10.0
	In.:	(.197)	(.394)
Imperial	In.:	.200	.400
	mm:	(5.08)	(10.16)
- Mounting Options: Modular, Single-molding sizes from 2 to 8 poles



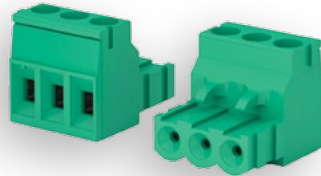
PSQ SERIES – Terminal Block

- Screw terminal wire retention
- Housing Heights: 18.6, 31.5, 45.0, 58.5 mm (.73, 1.24, 1.77, 2.30 in.)
- Voltage Rating: 300 Vac / 5.0 and 5.08 mm
600 Vac / 10.0 and 10.16 mm
- Current Rating: 24 A (UL/cUL/VDE) / 32 A (IEC/IMQ)
- Max. Wire Size: 2.5 mm² / 12 AWG
- Mtg. Versions: 2, 3 and 4 levels
- Pitches

Metric:	mm:	5.0	10.0
	In.:	(.197)	(.394)
Imperial	In.:	.200	.400
	mm:	(5.08)	(10.16)
- Mounting Options: Modular, Single-molding sizes from 2 to 3 poles

Family of Products

- Power Supplies
 - ITE & Medical
 - Open Frame
 - Enclosed
 - External Adapters
 - Desktop
- Terminal Blocks
 - Barrier Style
 - PCB Mounted
 - Custom Design
- EMI/RFI Filters
 - Single Phase
 - 3-Phase
 - DC
 - Military
 - Custom Design
- DC-DC Converters
 - 1 - 350 Watts



CURTIS
INDUSTRIES

A division of Powers Holdings, Inc.

2400 S. 43rd St.

Milwaukee, WI 53219

1-800-657-0853

tri-mag.com / curtisind.com

