

## DIN Ground

- **Plastic Body:** Polyamide 6.6
- **Clamp:** Hardened steel, electro-plated with zinc yellow chromated
- **Foot:** Steel, zinc plated and yellow chromated
- **Screws:** Steel, zinc plated and yellow chromated
- **Tracking Resistance:**  
IEC 112: CTI > 600  
VDE 0303: KB > 600

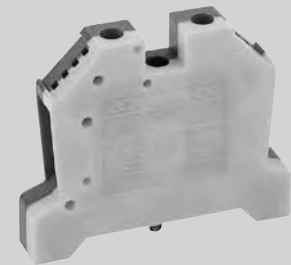
**6104300**  
**4/7**






**6104310**  
**6/8**



**6104320**  
**10/10**



<b>Dimensions</b>	58 mm (L) x 36 mm (H) x 7 mm (W)			58 mm (L) x 44 mm (H) x 8 mm (W)			58 mm (L) x 44 mm (H) x 10 mm (W)		
<b>Opening</b>	4 x 3.3 mm			5 x 4 mm			4 x 3.3 mm		
<b>Stripping Length</b>	10 mm			12 mm			13 mm		
<b>Screw Thread</b>	M 3			M 3.5			M 4		
<b>Ground Screw</b>	M 3			M 3			M 3		
<b>Metal Part</b>	Tin-plated copper			Brass			Tin-plated brass		
<b>Connecting Capacity</b>	Solid conductors mm <sup>2</sup> 0.5-4 Stranded conductors mm <sup>2</sup> 0.5-4			Solid conductors mm <sup>2</sup> 0.5-6 Stranded conductors mm <sup>2</sup> 0.5-2.6			Solid conductors mm <sup>2</sup> 1.5-10 Stranded conductors mm <sup>2</sup> 1.5-10		
<b>Conductors with Ferrules</b>	DIN 46288 / 1 mm <sup>2</sup> 0.5-4			DIN 46288 / 1 mm <sup>2</sup> 0.5-6			DIN 46288 / 1 mm <sup>2</sup> 1.5-10		
<b>Number of Connectable Conductors</b>	4 x 1.5 mm <sup>2</sup>			2 x 4 mm <sup>2</sup>			2 x 6 mm <sup>2</sup>		
<b>Gauges</b>	A4			B6			B6		
<b>Approvals</b>									
<b>Wire Range</b>	24-10 AWG	24-10 AWG	4 mm <sup>2</sup>	22-8 AWG	22-8 AWG	6 mm <sup>2</sup>	18-6 AWG	20-8 AWG	10 mm <sup>2</sup>
<b>Voltage Rating</b>									
<b>Current Rating</b>									
<b>Tightening Torque</b>	Max 0.6 Nm			Max 1.2 Nm			Max 2.0 Nm		
<b>ACCESSORIES</b>	<b>Cat. No.</b>			<b>Cat. No.</b>			<b>Cat. No.</b>		
<b>End Bracket</b> Qty. pk. 50	<b>6804150</b> – 58 mm (L) x 36 mm (H) x 9 mm (W)			<b>6804150</b> – 58 mm (L) x 36 mm (H) x 9 mm (W)			<b>6804150</b> – 58 mm (L) x 36 mm (H) x 9 mm (W)		



## DIN Ground

- **Plastic Body:** Polyamide 6.6
- **Clamp:** Hardened steel, electroplated with zinc yellow chromated
- **Foot:** Steel, zinc plated and yellow chromated
- **Screws:** Steel, zinc plated and yellow chromated
- **Tracking Resistance:**  
IEC 112: CTI > 600  
VDE 0303: KB > 600

**6104330**  
**16-25/12**






**6104340**  
**35-50/16**



**6504010**  
**4/6 Mini**



<b>Dimensions</b>	58 mm (L) x 49 mm (H) x 12 mm (W)	62 mm (L) x 60 mm (H) x 16 mm (W)	32 mm (L) x 28 mm (H) x 6 mm (W)
<b>Opening</b>	7 x 7.4 mm	11 x 10 mm	4 x 3.3 mm
<b>Stripping Length</b>	14 mm	18 mm	10 mm
<b>Screw Thread</b>	M 5	M 6	M 3
<b>Ground Screw</b>	M 3	M 4 Nickel-plated brass	
<b>Metal Part</b>	Brass	Tin-plated brass	Tin-plated Copper
<b>Connecting Capacity</b>	Solid conductors mm <sup>2</sup> 1.5-25 Stranded conductors mm <sup>2</sup> 1.5-26	Solid conductors mm <sup>2</sup> 2.5-50 Stranded conductors mm <sup>2</sup> 2.5-35	Solid conductors mm <sup>2</sup> 0.5-4 Stranded conductors mm <sup>2</sup> 0.5-4
<b>Conductors with Ferrules</b>	DIN 46288 / 1 mm <sup>2</sup> 1.5-16	DIN 46288 / 1 mm <sup>2</sup> 2.5-35	DIN 46288 / 1 mm <sup>2</sup> 1.5-4
<b>Number of Connectable Conductors</b>	2 x 10 mm <sup>2</sup>	2 x 25 mm <sup>2</sup>	4 x 1.5 mm <sup>2</sup>
<b>Gauges</b>	B7	B9	A4
<b>Approvals</b>			
<b>Wire Range</b>	14-4 AWG   14-4 AWG   25 mm <sup>2</sup>	14-1/0 AWG   14-2/0 AWG   35 mm <sup>2</sup>	18-10 AWG   18-10 AWG   2.5 mm <sup>2</sup>
<b>Voltage Rating</b>			
<b>Current Rating</b>			
<b>Tightening Torque</b>	Max 3.0 Nm	Max 5.0 Nm	Max 0.6 Nm
<b>ACCESSORIES</b>	<b>Cat. No.</b>	<b>Cat. No.</b>	<b>Cat. No.</b>
<b>End Bracket</b> Qty. pk. 50	<b>6804150</b> – 58 mm (L) x 36 mm (H) x 9 mm (W)	<b>6804150</b> – 58 mm (L) x 36 mm (H) x 9 mm (W)	<b>6804500</b> – 58 mm (L) x 36 mm (H) x 9 mm (W)

